

Domain-Focus HMI 2021 Q2 Sales Kit

Giorgio Wei, PM, Advantech



Advantech Industrial HMI and Monitor

Ideal for diverse visualization applications directly on machines/cabinet, in the plant, or centralized control rooms



Machine Builder



Packaging



Automotive



Food & Beverage



Pharmaceutical



Oli & Gas



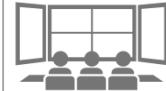
Machine Monitor & Control



Energy Control Cabinet



Production Line Visualization



Central Control Visualization

WebAccess/HMI



CODESYS

WebAccess/SCADA



THINMANAGER
A Rockwell Automation Technology

3rd Party Software



Configurable Panel IPC
(PPC-6000)



Embedded Control HMI
(TPC-5000)



Domain HMI
(SPC-200/500/800)



Operator Panel
(WOP-2000/100/200)



Web Browser HMI
(TPC-71W)



All-in-one/Modular Thin-Client
(PPC-3000/TPC-2000)



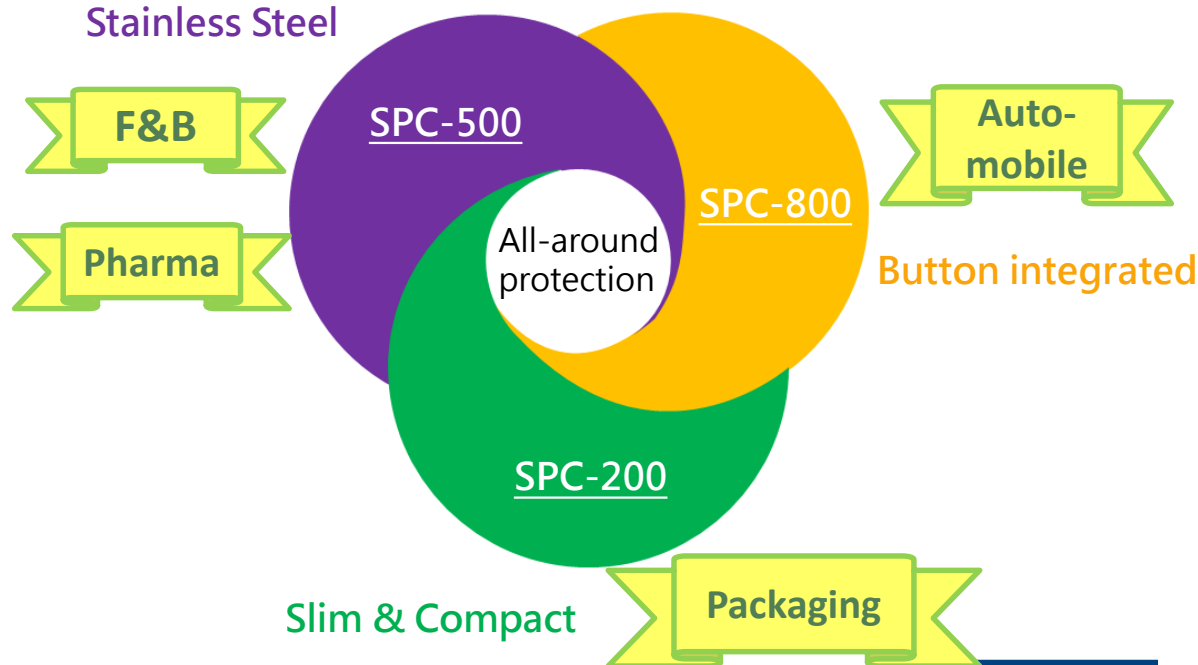
Industrial Monitor
(FPM-200/300/600/700/800)

Focused Industries

Explosion Proof segment



All-around Protection segment



Domain-Focus HMI (Explosion Proof PC)

HMI & Monitor

FPM-8151H

- 15" industrial monitor
- Front 316L Stainless Steel Bezel
- 5W Resistive touch
- DC +24V, VGA & DVI-D input
- Ground isolation; -20~60°C
- C1D2 Certified



MP



TPC-1881WPH

- 18.5" 16:9 350 nits FHD LED LCD
- Intel 4th Core i5, 4GB DDR3
- C1D2 Certified
- Multi-touch PCT, IP66
- Rich I/O & PCIe and mPCIe Slot
- iDoor & iKey support



MP



TPC-125H

- 15" TFT LCD, 50K~70K hrs
- Intel® Atom™ E3845
- Wide temp. -20~60°C (E3800 series)
- C1D2 Certified for explosive hazardous environment
- IP66 true flat resistive touch
- Mini PCIe Slot (iDoor supported); Intel I210 LAN



iDor

MP

TPC-155H

- 15" TFT LCD, 50K~70K hrs
- Intel® Atom™ E3845
- Wide temp. -20~60°C
- C1D2 Certified for explosive hazardous environment
- IP66 true flat resistive touch
- Mini PCIe Slot (iDoor supported); Intel I210 LAN



iDor

Q2 '21



Domain-Focus HMI (Standalone PC)

Available Developing Planning

Stainless Steel HMI

FPM-8151H-R3BE

- 15" industrial monitor
- Front 316L Stainless Steel Bezel
- C1D2 Certified for hazardous area



IPPC-5211WS-J3AE

- 21.5" FHD 300nits, Celeron J1900
- IP69K Rated Protection w/ 304L SS
- Rittal CP40 arm system supported



SPC-515-633AE

- 15" PCAP Panel PC with 6th Gen CPU
- IP69K Rated Protection w/ 304L SS
- Touch film to avoid glass splash



Hot

Innovative HMI

SPC-821-633AG/P

- 21.5" PCAP Panel PC with 6th Gen CPU
- Pipe Mount w/ All-Around IP65
- RAFI FS 22+ push button supported



Hot

SPC-815-633AG/P

- 15.6" PCAP Panel PC with 6th Gen CPU
- Pipe Mount w/ All-Around IP65
- RAFI FS 22+ push button supported



SPC-821-M7AG/P

- 21.5" Full HD PCAP Touch Monitor
- Pipe Mount w/ All-Around IP65
- RAFI FS 22+ push button supported



Hot

SPC-815-M7AG/P

- 15.6" HD PCAP Touch Monitor
- Pipe Mount w/ All-Around IP65
- RAFI FS 22+ push button supported



Encapsulated Control HMI

SPC-1881WP-633AE

- 18.5" HD 300nits, PCAP TCH
- 4TH Gen. Core i3/i5/i7
- VESA Mount w/ All-Around IP66



SPC-221-633AE

- 21.5" FHD 300nits, PCAP TCH
- 6TH Gen. Core i3/i5/i7
- VESA Mount w/ All-Around IP66



Hot

Explosion Proof segment



Class/Division Definition



Hazardous Materials	Class	Division
Gasses or Vapors	Class I	Division I An explosive mixture continuously present or likely to occur during normal operation
Combustible Dusts	Class II	Division II
Fibers or Filings	Class III	An explosive mixture that is NOT likely to occur in normal operation...but may be accidentally present

Advantech Class I, Division 2 Industrial Panel PC: TPC-125H/155H

	TPC-125H/ TPC-155H
CPU	Intel® Atom™ E3845 Quad-Core 1.9GHz
RAM	Default 4GB DDR3L SDRAM (up to 8GB)
Display	Size: 12" and 15"
	Resolution: 1024x768/ 1024x768
	Colors: 16.2M/ 16.7M
	Viewing angle: 178/178; 176/176
Luminance: 600nits/ 300nits	
LAN	10/100/1000BASE-T x 2
I/O	1 x RS-232; 1 x RS-232/422/485 1 x USB 3.0 ; 3 x USB 2.0 1 x iDoor slot 1 x SSD bay; 1 x mSATA
Expansion	1 x Full-size mini PCIe
Power Input	24VDC +/- 20%
Operation Temp.	-20 ~ 60°C (-4 ~ 140 °F)
Dimension	311.8 x 238 x 55.4 /383.2x 307.3 x 55.9 mm
Mounting	Panel mount with front panel IP66
Certifications	BSMI, CCC, CE, FCC Class A, UL C1D2



UL Class 1, Division 2 Certified

Compact I/O

Wide Temp. Range

Front Panel IP66

In-Cabinet Design

Wireless Communication

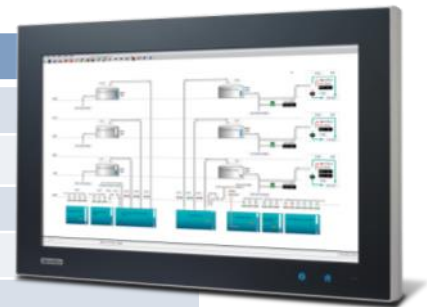


WebAccess/HMI
WebAccess/SCADA

ADVANTECH

Advantech Class I, Division 2 Industrial Panel PC: TPC-1881WPH

	TPC-1881WPH
CPU	Intel 4th Generation Core i5-4300U 1.9GHz
Onboard RAM	4GB DDR3L 1600MHz SO-DIMM SDRAM (up to 8GB)
Display	Size :18.5
	Resolution:1920 x 1080
	Colors:16.7M
	Viewing angle:170/160
	Luminance:350
LAN	10/100/1000BASE-T x 2 (one port supports iAMT)
I/O	RS-232 x 1, RS-232/422/485 x 1 USB 3.0 x 2, HDMI 1.4 x 1 Audio line out x 1, USB 2.0 x 1 (optional) Audio MIC x 1 (optional)
Expansion	Full-size mini PCIe
Power Input Range	24VDC +/- 20%
Operation Temp.	0 ~ 55°C (32 ~ 131°F)
Dimension	488 x 309 x 56.7 mm (19.21" x 12.17" x 2.23")
Certifications	BSMI, CCC, CE, FCC Class A, UL C1D2



Advantech Class I, Division 2 HMI: FPM-8151H

Model	FPM-8151H	
Display	Size (diagonal)	15" XGA
	Resolution	1024 x 768
	Colors	16.2M
	Viewing Angel	160, 140
	Luminance	350
Direct VGA Input	Yes	
DVI Input	Yes	
Touch-screen (optional)	Resistive	
OSD (On-Screen Display)	Yes	
Power Adapter (AC)	100-240 V	
DV Power Input	24 V _{DC}	
Front Panel Ingress Protection	NEMA4/IP65	
Operating Temperature	-20 ~ 60°C (-4 ~ 140°F)	
Dimensions (W x H x D)	422 x 338 x 68 mm (16.61" x 13.31" x 2.68")	
Certifications	CID2 Group ABCD, T4	



Drilling Rig Control



TPC-125H

- Data acquisition – log and archive activities of rigs and sensors
- Real-time rig monitoring and overall equipment effectiveness (OEE) analysis
- Warning and emergency control

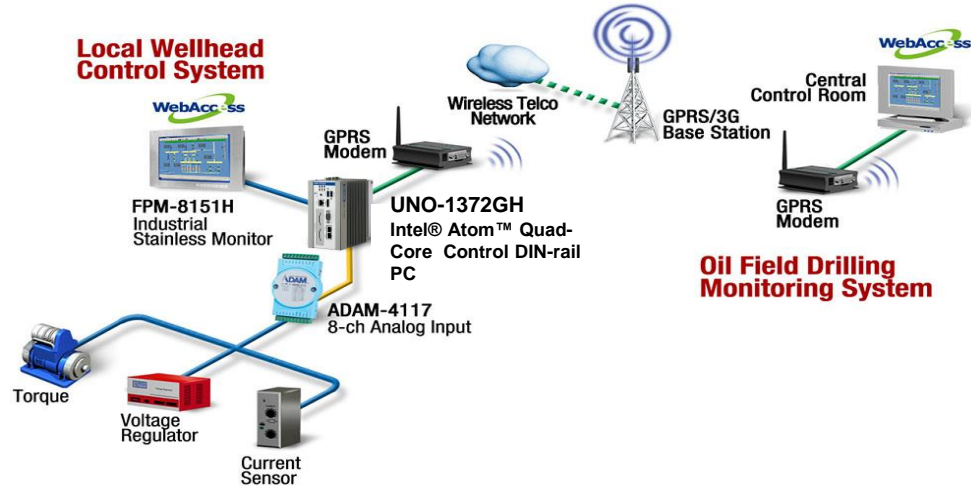
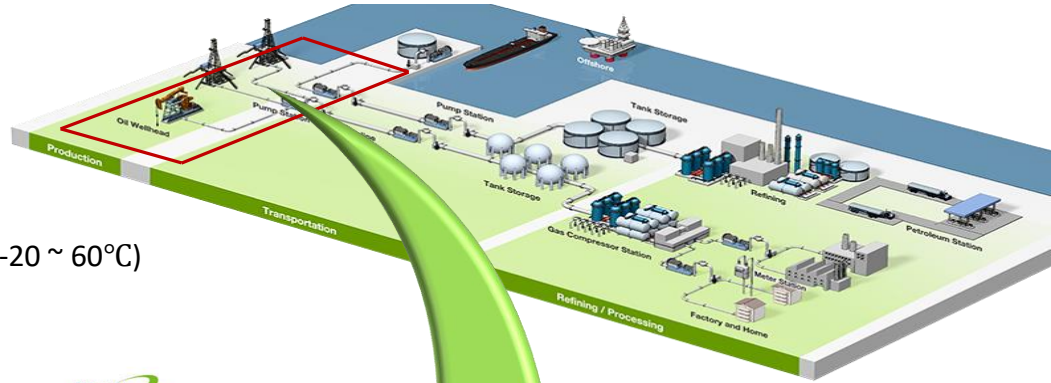
- Intel® Atom™ Quad-Core
- In-Cabinet panel mount
- Front panel IP66 dust & water proof
- Resistive touch
- 2 x GbE, 4 x USB, 2 x COM, iDoor, mSATA, 1 x mPCIe, 1 x SATA, 1 x power terminal

Oil & Gas Application



FPM-8151H

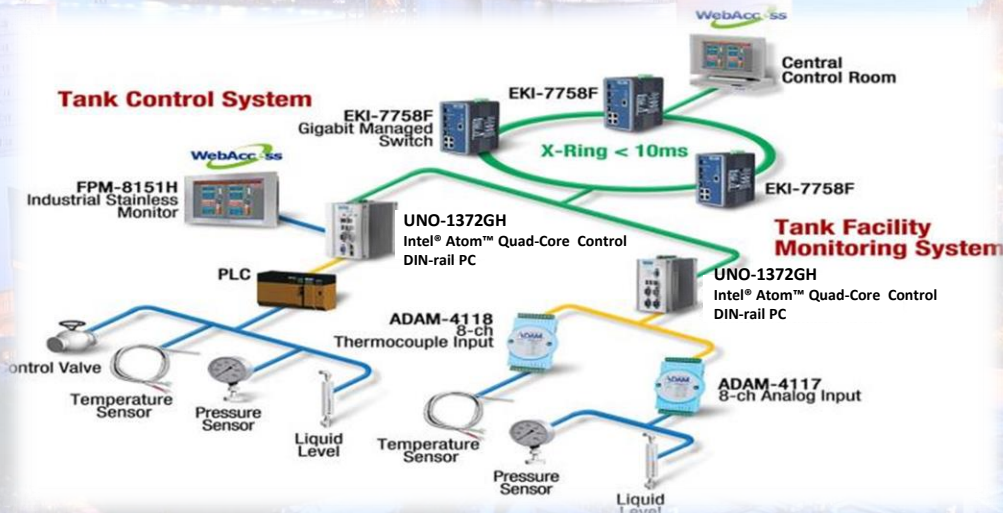
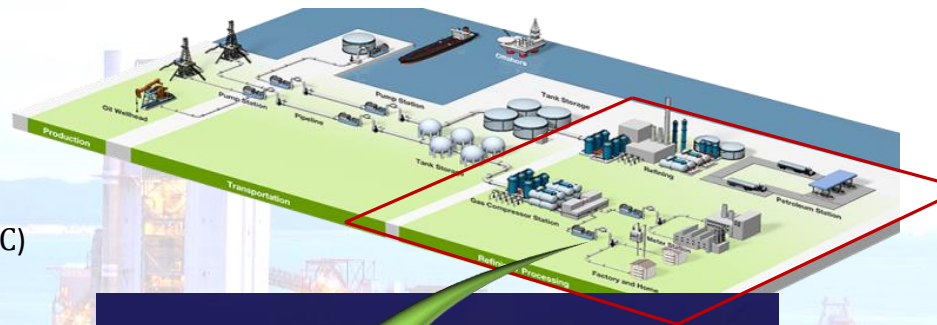
- 15" 4:3 XGA TFT LCD
- Resistive touch screen
- Ruggedized enclosure
- Wide operation temperature(-20 ~ 60°C)
- CID2 Group ABCD, T4



Tank Control & Monitoring

FPM-8151H

- 15" 4:3 XGA TFT LCD
- Resistive touch screen
- Ruggedized enclosure
- Wide operation temperature(-20 ~ 60°C)
- CID2 Group ABCD, T4



- Real-time oil tank level monitoring
- System warning and control
- Sensor data collection, integration & transmission

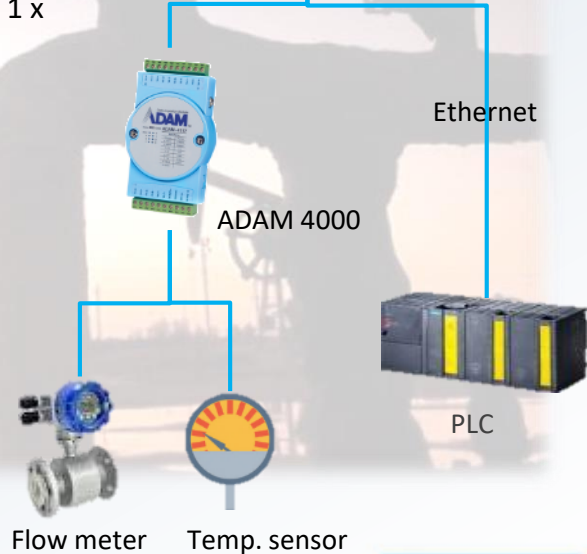
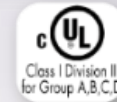
Gas Compressor Control & Monitoring



- Monitoring engine operational data, such as speed and load control visibility
- Collecting and aggregating data for analysis and overall equipment efficiency

TPC-125H

- Intel® Atom™ Quad-core
- In-cabinet panel mount
- Resistive touch
- 2 x GbE, 4 x USB, 2 x COM, iDoor, mSATA, 1 x mPCIe, 1 x SATA, 1 x power terminal



Gasoline KIOSK Application



TPC-125H

- Intel® Atom™ Quad-core
- In-cabinet panel mount
- Resistive touch
- 2 x GbE, 4 x USB, 2 x COM, iDoor, mSATA, 1 x mPCIe, 1 x SATA, 1 x power terminal





Standalone segment

Platform Products Evolution in terms of mounting

NOW (Panel Mount)



FUTURE (Standalone)



Traditional HMI & Edge Computing Platforms

- *Cut-out of chamber or cabinet limited*
- *Lack of flexibility for ID design of machines*

Standalone Products

- All-Around IP protection
- Great compatibility & integration with devices

Offering of Standalone HMI

Encapsulated HMI



SPC-200

SPC-1881WP

- 18.5" HD 300nits, PCAP TCH
- 4TH Gen. Core i3/i5/i7
- Customizable I/O configure

SPC-221-633AE

- 21.5" FHD 300nits, PCAP TCH
- 6TH Gen. Core3/i5/i7
- Customizable I/O configure

Stainless Steel HMI



SPC-500

FPM-8151H-R3BE

- 15" industrial monitor
- Front 316L SS Bezel
- C1D2 certified

IPPC-5211WS

- 21.5" FHD 300nits, J1900
- IP69K w/ 304L SS Enclosure
- Rittal CP40 arm system

SPC-515-633AE

- 15" PCAP PC, Core i3 6100U
- IP69K w/ 304L SS Enclosure
- VESA Mount

Innovative Integrated HMI



SPC-800

SPC-815

- 15.6" PCAP PC, i3-6100U
- Pipe Mount w/ IP65
- RAFI FS 22+ push button

SPC-821-633AG/P

- 21.5" PCAP PC, i3-6100U
- Pipe Mount w/ IP65
- RAFI FS 22+ push button

Offering

Target “Selected” Industry of Standalone Products

Target Industry

Packaging



Food & Beverage



Pharmaceutical



Automotive



Environmental Requirement

Powder & Dust –proof :
All-Around IP
Domain Certification:
IEC 61131-2 Compliance
Data Acquisition :
Push Button & TPM 2.0

Daily Wash : **All-Around IP Protection**
Cold Storage & Smoke Chamber : **Wide Temp.**
Acid & Alkaline Resistance : **Rugged Enclosure**
Domain Cert. : **EN1672-2 (EHEDG)** Compatible Design

Material limitation :
Silicone-Free
Domain Certification:
UL 61010 Compliance
High Performance :
Fanless with core i3+

Offering



SPC-200



SPC-500



IPPC-5211WS



SPC-800

Successful Standalone HMI Case Globally



The packing machine builder which required a real-time operation with all-around protection.
Packing Industry
SPC-1881WP



Data Visualization on the packing machines. To avoid penetration of dust and ID concern so encapsulated HMI is needed
Packing Industry
SPC-2140WP

HKSCAN

The end-user is targeting a meat processing MES solution and requesting a all-around solution for easily cleanable
Food & Beverage Industry
IPPC-5211WS



The end-user requires a anti-radiation HMI for the pharma manufacturing production line
Pharmaceutical Industry
IPPC-5211WS



Standalone HMI as part of the package plant export solutions for MES display and data visualization
Pharmaceutical Industry
IPPC-5211WS

RECOGNITION ROBOTICS
The Visual Guidance Company



Real-time vision controller of the robot arm for the car manufacturing machines.
Automotive Industry
SPC-1881WP

ambev

For the beer-filling production line data visualization and process optimization use
Food & Beverage Industry
IPPC-5211WS



Innovative HMI (SPC-800)

01

Plug & Play :
General I/O with All-Around Protection

02

Silicone-Free:
Great fit for high-end automotive industry

03

Extended Scope :
Independent visualization node in IIoT field



Processing &
Packaging

Machine
Builders

Automotive

RAFI

RITTAL

BERNSTEIN

ADVANTECH

SPC-800

All-around IP65 rating
ensures reliable computing
in harsh environments



SPC-800 Front Look & Design Overview

Front USB 2.0 & Reset Button with waterproof rubber cover

Enhanced PCAP touch screen glass to ensure ruggedness

Printed LOGO and easily customization with MOQ 15

Built-in RAFI push buttons for intuitive operation



Available in 15.6" & 21.5"

**Noted: Push Button & Extension can be customized*

SPC-800

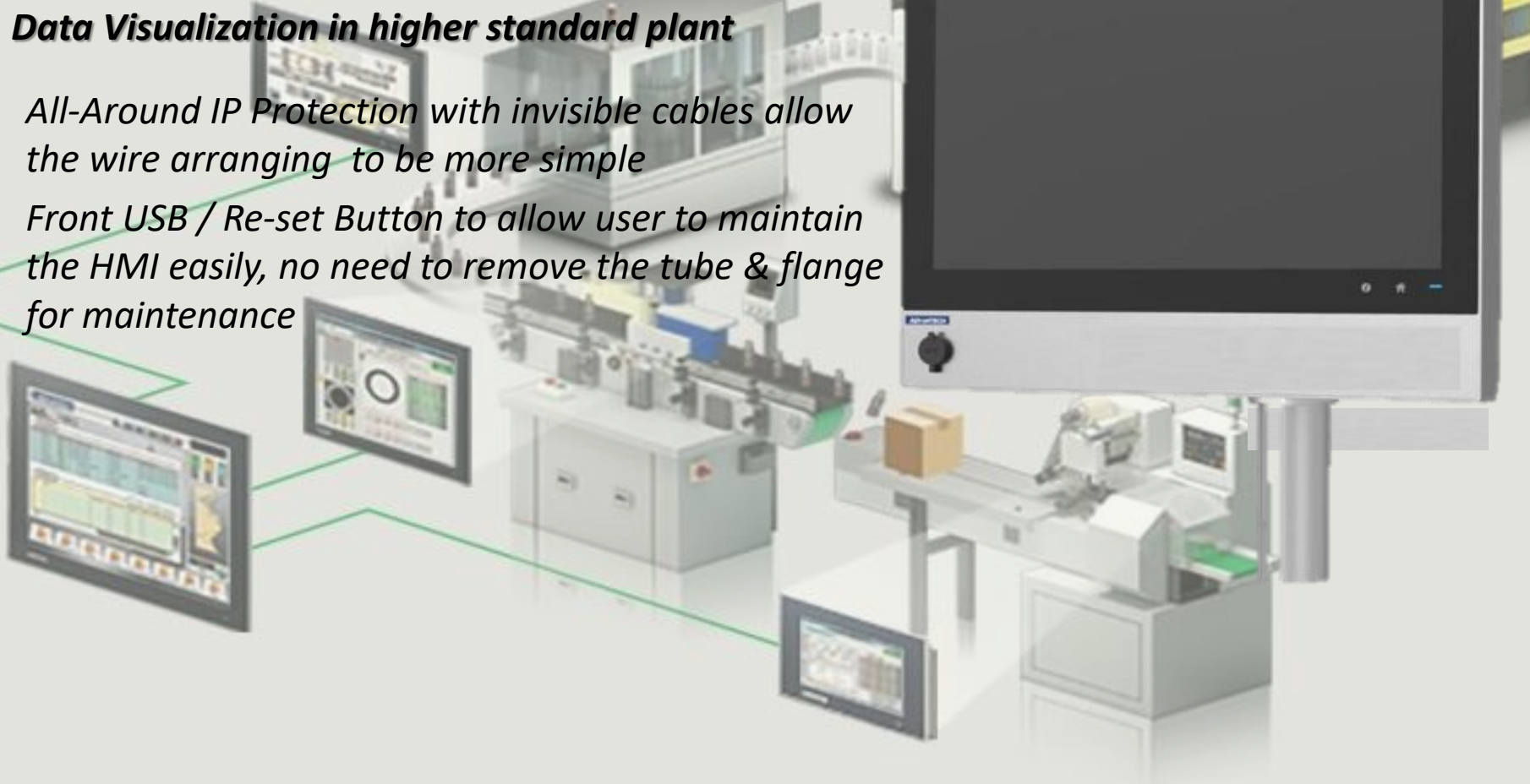
Button-integrated design
delivers intuitive operation



Standard Product : SPC-800

Data Visualization in higher standard plant

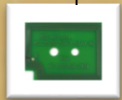
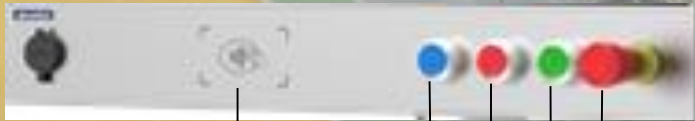
- *All-Around IP Protection with invisible cables allow the wire arranging to be more simple*
- *Front USB / Re-set Button to allow user to maintain the HMI easily, no need to remove the tube & flange for maintenance*



Intelligent Operator Panel

Operator Panel for Automotive plant Assembly Line

- *Hot-Keys with push-button to provide more physical feedback to raise the production efficiency*
- *NFC card reader allowed more application possibility on information security and faster information authentication process*



NFC Card Reader

Allowed Ops to authenticate the ID before access important parts

ON

OFF

PAUSE

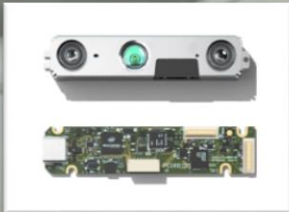
Emergency Stop

Robotic HMI

HMI with real-time capture camera

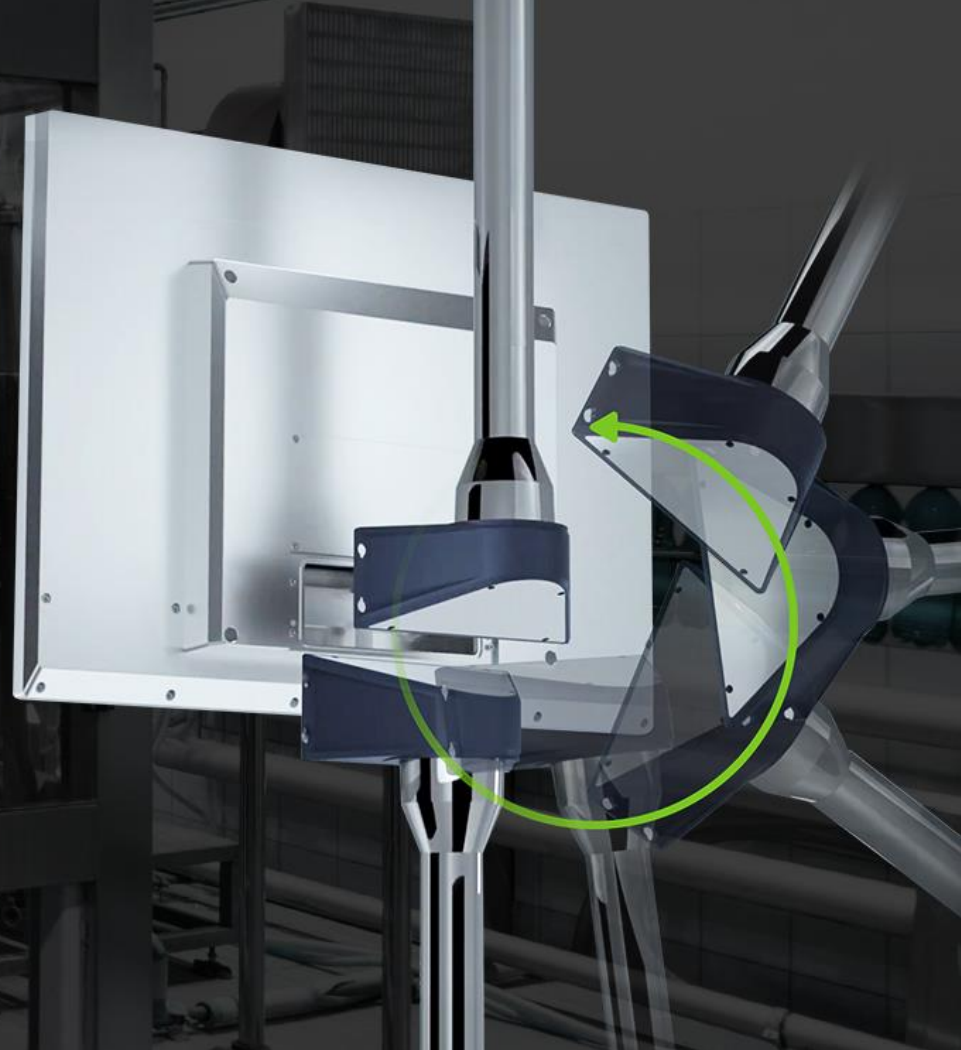
- *Cost-effective real-time motion capture camera with capability to outline the space of current location*
- *Intel® RealSense SDK allowed developer to interlock and updated at the first glimpse*

*Intel D435 Cameras
(USB driven)*



SPC-800

Flexible mounting for
cabinet-free installation

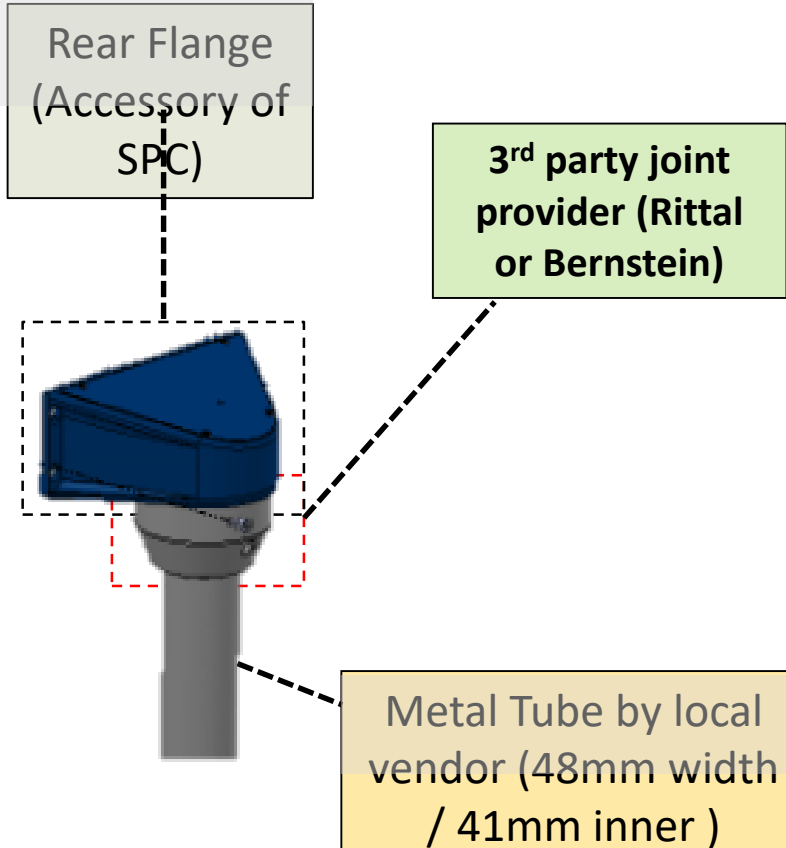


Product Rear Side Overview



- Same Rear Flange for both Pendant and Pedestal mounting ways
- Support most common 3rd party arm system provider globally : Rittal & Bernstein

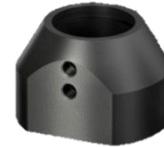
3rd Party Arm System Support



	Rittal	Bernstein
Supported Model	CP40 (with narrower tube)	CS-480 B.Flex
Maximum Load	400N	500N (1m length of the extension arm)



CP 6501.050 (Steel)



CP 6501.070 (Steel)



CP 6501.120 (Steel)



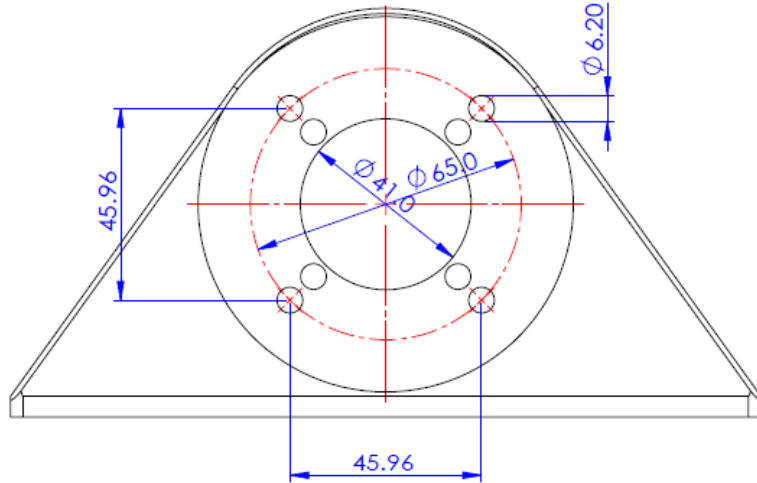
CS-480 B.Flex

*For Rittal CP40 series, there are some limitation regarding to the screw dimension. Not all CP40 can be supported.

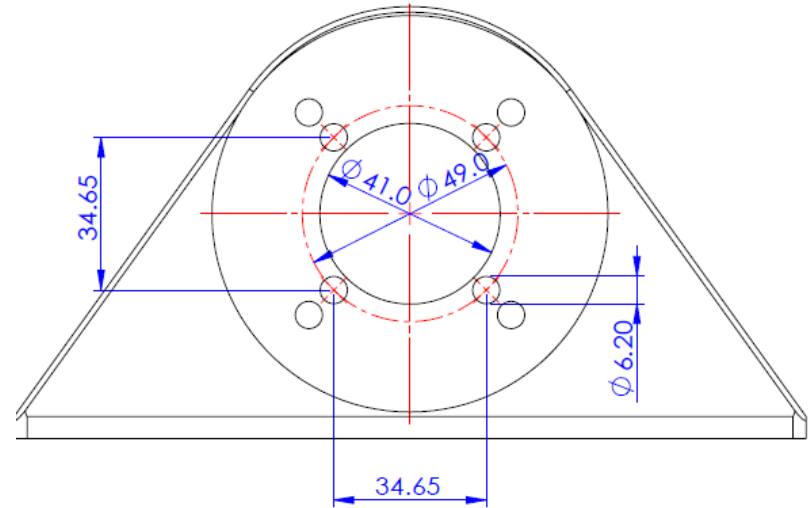
*Contact your local Advantech contact window for more information

SPC-800 Flange Installation Guidance

Unit : mm



For 



For  BERNSTEIN

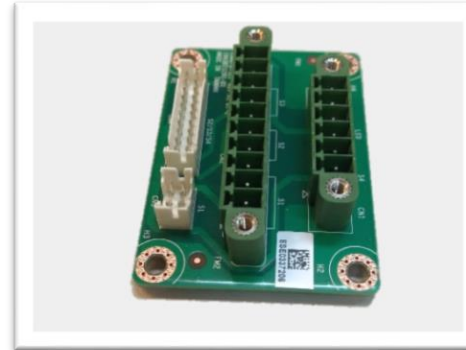
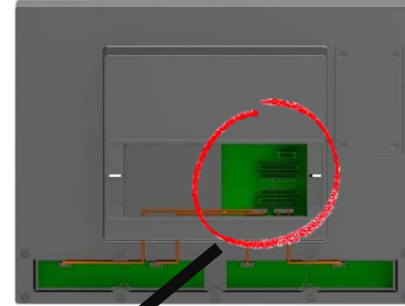
- Flange of SPC-800 supports 2 set of screw dimension for both Rittal & Bernstein
- For Rittal CP40, not all P/N can be supported by SPC-800.
- Please make sure the connected screw dimension be 65mm (diameter) & 46mm (length between holes)

SPC-800

New HMI with integrated buttons facilitates data visualization



Push Button Connection



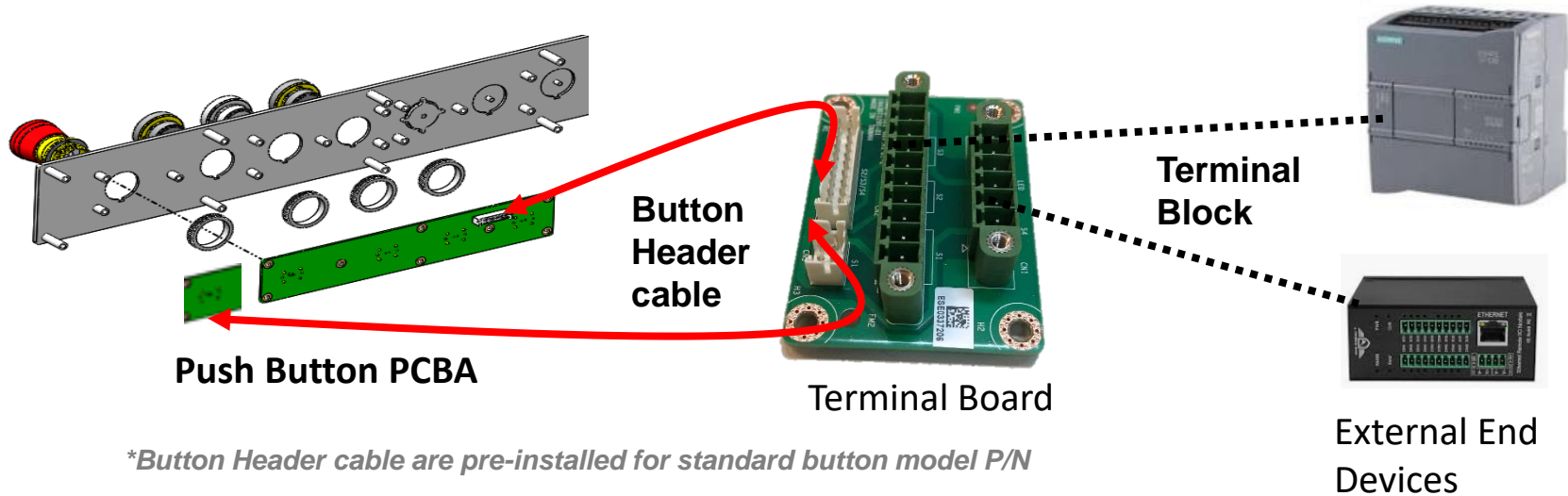
Main Model Selection (Pre-Configured Button Model)				
P/N	SPC-821-633AP	SPC-815-633AP	SPC-821-M7AP	SPC-815-M7AP
Type	21" Panel PC	15" Panel PC	21" Monitor	15" Monitor
Push Button	3	3	3	3
Emerg. Button	1	1	1	1
Front USB	V	V	V	V

Panel Size	Max. Buttons Supported	Max. LED Buttons Supported
SPC-815	7	6
SPC-821	10	8

- Terminal Board will pre-installed in the standard model with push button configure
- Users follow the pin definition and connected to end devices directly with terminal block

Terminal Board Wiring Diagram

Wiring Diagram



SPC-800 Ordering Information



-AG



-AP

Main Model Selection (Standard Model)

P/N	SPC-821-633AG	SPC-815-633AG	SPC-821-M7 (L)AG	SPC-815-M7(L)AG
Type	21" Panel PC	15" Pane PC	21" Monitor	15" Monitor
Push Button	N/A (Required to order accessory for push button assembly)			
Emerg. Button				
Front USB	V	V	V	V

Button Main Model Selection (Pre-Configured Button Model)

CTOS P/N	SPC-821-633AP	SPC-815-633AP	SPC-821-M7(L)AP	SPC-815-M7(L)AP
Type	21" Panel PC	15" Pane PC	21" Monitor	15" Monitor
Push Button	3	3	3	3
Emerg. Button	1	1	1	1
Front USB	V	V	V	V

*It can be equipped with push button by either "Ready-to-go Push Button Bracket" or pick up "Button Accessory" separately

Stainless Steel HMI Introduction



SPC-515



FPM-815S/817S



IPPC-5211WS



FPM-8151H

Waterproof & Dustproof (IP)

- Daily High-pressure water clean
- All-Around IP69k protection design

Rugged 304L (V2A) SS Housing

- Withstand fully clean with disinfectants / cleanser / Acid & Alkali
- Highly hygiene concerned

Ubiquitous Mounting Ways in Different Field

- Panel Mount : FPM-800
- VESA w/ IP69k : SPC-515
- Pipe w/ IP69k : IPPC-5211WS

Food Process Industry-Friendly

- Touch ON/OFF via iKey
- Optional F/W for gloves
- **EN 1672-2** compliance
- **C1D2** Solutions for hazardous regions

Stainless Steel HMI in Factory Automation

01

- **Field** : Weighing Room
- **Requirement** : SS Enclosure / low performance / Invisible Cables

Unique Selling Points:

- Cost-effective HMI Solutions
- Panel Mount would be great choices



• Suggestion Model :

- FPM-8151H
- FPM-815S
- FPM-817S



02

- **Field** : Manufacturing
- **Requirement** : High Performance / IP Protection

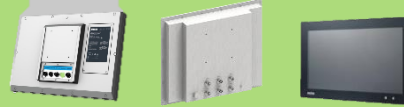
Unique Selling Points:

- All-Around IP66/69k or Front IP66
- High Stability



• Suggestion Model :

- SPC-221 / SPC-515



03

- **Field** : Packaging
- **Requirement** : Rugged 304L SS Housing / Certification / Sustain to chemical ingredients

Unique Selling Points:

- High hygiene concern (certification)
- All-Around IP69k



• Suggestion Model :

- SPC-515 / IPCC-5211



ADVANTECH

IPPC-5211WS Introduction

- 304L Stainless Steel Enclosure
- Touch enable/disable function to ensure safety during washing
- Front side or all-around IP69k protection
- All of the IO ports can be locked by screws in order to avoid unintended unplugging during assembly.



VESA



IP69K : Frond side



Flange connection adapter



IP69K : All around



IPPC-5211WS Key Differentiation with Competitors

General I/O w/ Cover Design

General I/O such as USB 2.0 / RJ45 / RS-232 to ensure users the best compatibility for other devices

Pipe Mount

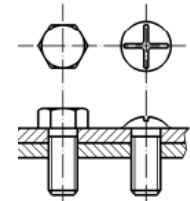
Supports most common pipe width dimension & RAFI joint screw dimension (Pedestal & Pendent)

Screw-less Design at the rear cover

One-piece rear cover with 30mm thickness stainless steel raw material to ensure best hygiene requirement

Stainless steel hex head cap screws (Only 4 screw at the rear)

Easier to clean instead of traditional screws



IPPC-5211WS Ordering Information

STEP 1

Choosing rear cover material



Aluminium or Stainless Steel

STEP 2

Choosing Mounting Ways



Flange Adapter

STEP 3

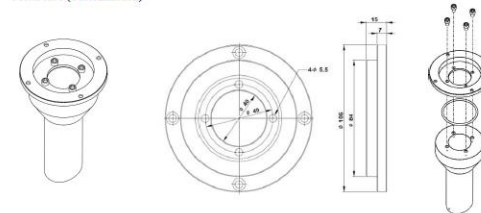
Tube & Arm System Selection



Arm System Support

The metal tube would require local supply (Support Rittal CP40 installation dimension)

• Metal tube (Customization)

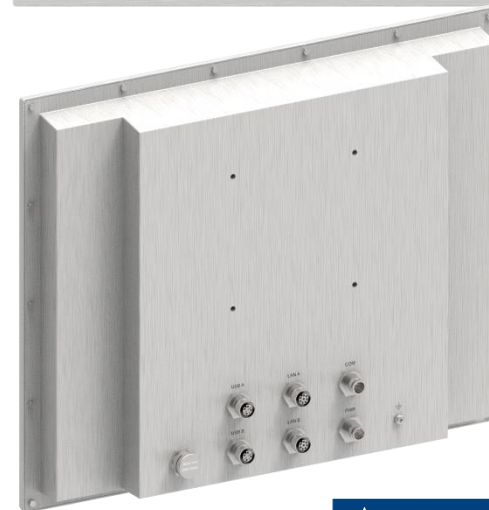


Rear Cove Type	P/N
Aluminium Cover (Black Cover)	IPPC-5211WS-J3AE
Stainless Steel Cover (Silver Cover)	IPPC5211WSJ1501E-T

Mounting Ways	P/N
VESA	No Flange Adapter Needed (Only front IP69k)
Pipe Mount (non stainless steel / Black)	IPPC-5211WS-EMKE (Full IP69k Protection)
Pipe Mount (Stainless Steel / Silver)	IPPC-5000-FLAE (Full IP69k Protection)

SPC-515 Introduction (VESA + M12 Solution)

Model	SPC-515	
Display	Size (diagonal)	15" XGA
	Resolution	1024 x 768
	Luminance	300
	Backlight Life	70000
CPU	Core i3 6100U / Celeron 3955U (optional)	
RAM	DDR3L 8GB	
Touch-screen	PCAP with enhanced glass	
DV Power Input	24 V _{DC}	
I/O	M12 A-Coded: USB*2 / COM*1 / LAN*2 / POWER*1	
IP Protection	All-Around IP69k	
Operating Temperature	0~ 50°C	
Surface Treatment	Hair-Line Finished	
Mounting	VESA 100x100	
Certifications	EN1672-2 / CE / FCC / CB / UL62368	

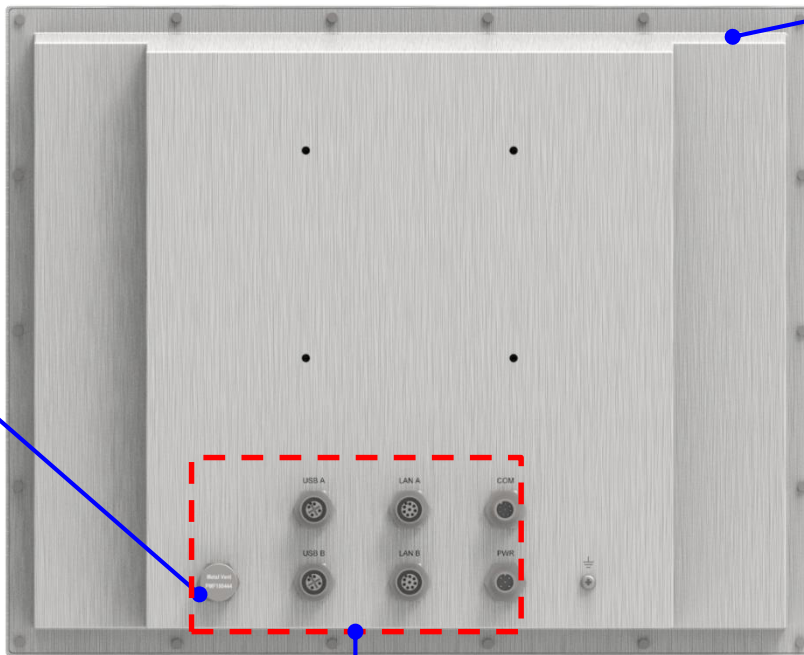


Hygiene-concerned Rear-cover design of SPC-500



Pressure-relief Valve

Allow air flow under IP69k protection to speed up the process of foggy on touch screen glass



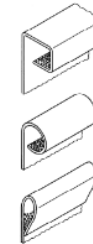
M12 A-Code Conn.:
Power*1 / USB*2 / LAN*2/COM*1

Flexible on I/O Customization

Bevel at all edges

All bevels to ensure the water drip would drop normally instead of flooding

HYGIENE RISK

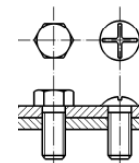


ACCEPTABLE



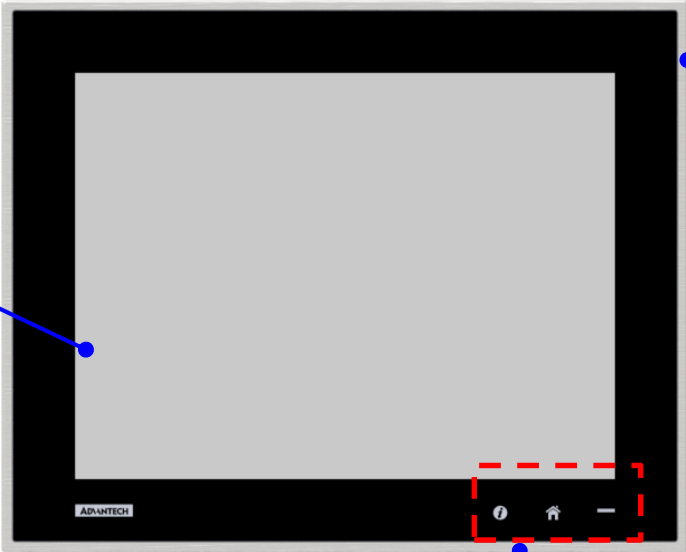
Stainless steel hex head cap screws
(Good for clean)

Easier to clean instead of traditional screws



SPC-515 Key Differentiation with Competitors

Protective Film
Protective Film on touch screen to avoid glass shards splash



Narrow edge Front Bezel with Hairline-surface treatment 304L stainless steel front bezel

Easier to clean instead of traditional screws



Touch On / OFF Features

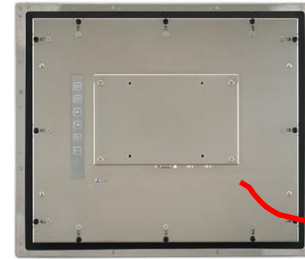
With configurable iKey, users can turn off touch easily to avoid mistake during daily wash



Stainless Steel Industrial Monitor – FPM-800S (Panel Mount Solution)



304 Stainless Steel
front bezel



Anti-rust coated
rear cover (SPCC)

✓ Easy Cleaning

✓ Sanitization

✓ Glove applications (Res. Touch)

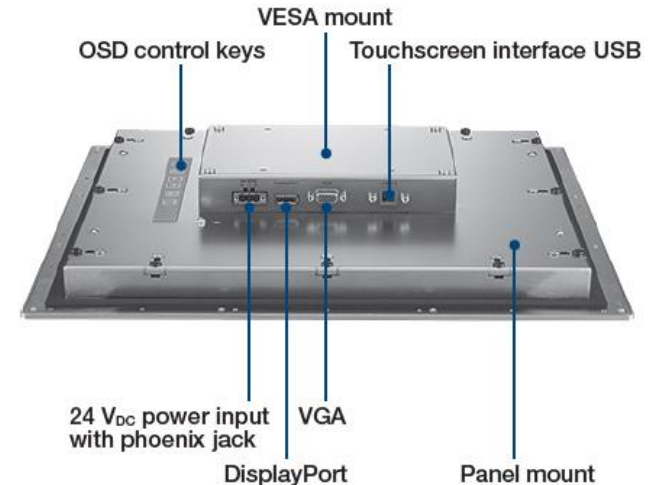
✓ Wide Operation Temp. (-20~60°C)

FPM-800S Product Specifications



Front Panel IP66

Product		FPM-815S	FPM-817S
Display	Size	15"	17"
	Resolution	1024 x 768	1280 x 1024
	Aspect ratio	4:3	5:4
	Luminance	500 nits	350 nits
	Number of colors	16.7M	16.7M
	Backlight life	70,000 hrs	50,000 hrs
Touch	Surface Treatment	Anti-glare	Anti-glare
	Touch Technology	Resistive	Resistive
I/O ports	Power input	DC 24V	DC 24V
	Video interfaces	VGA/DP	VGA/DP
	Touch Connection	USB	USB
Mounting	Default	VESA/Panel	VESA/Panel
	Optional	Wall/Stand (with FPM-1000T-SMKE)	Wall/Stand (with FPM-1000T-SMKE)
Ingress Protection		Front panel IP66	Front panel IP66
Operation Temperature		-20~60°C	-20~60°C
Warranty		2 years	2 years



SPC-200 Introduction



All-around Die-casting IP66 with M12 connectors

Encapsulated HMI (SPC-200)

Light & Easy to Mount

- All-Around IP66 Protection
- VESA 75/100 supported
- Slim & Compact Design

Customized I/O

- Shock protection M12 cables
- Customizable I/O for both TYPE & QTY

Powerful Platform

- Intel 6th Gen. Skylake-U i3/i5/i7 embedded CPU
- Up to 16GB RAM
- Intel LAN Chipset

SPC-221



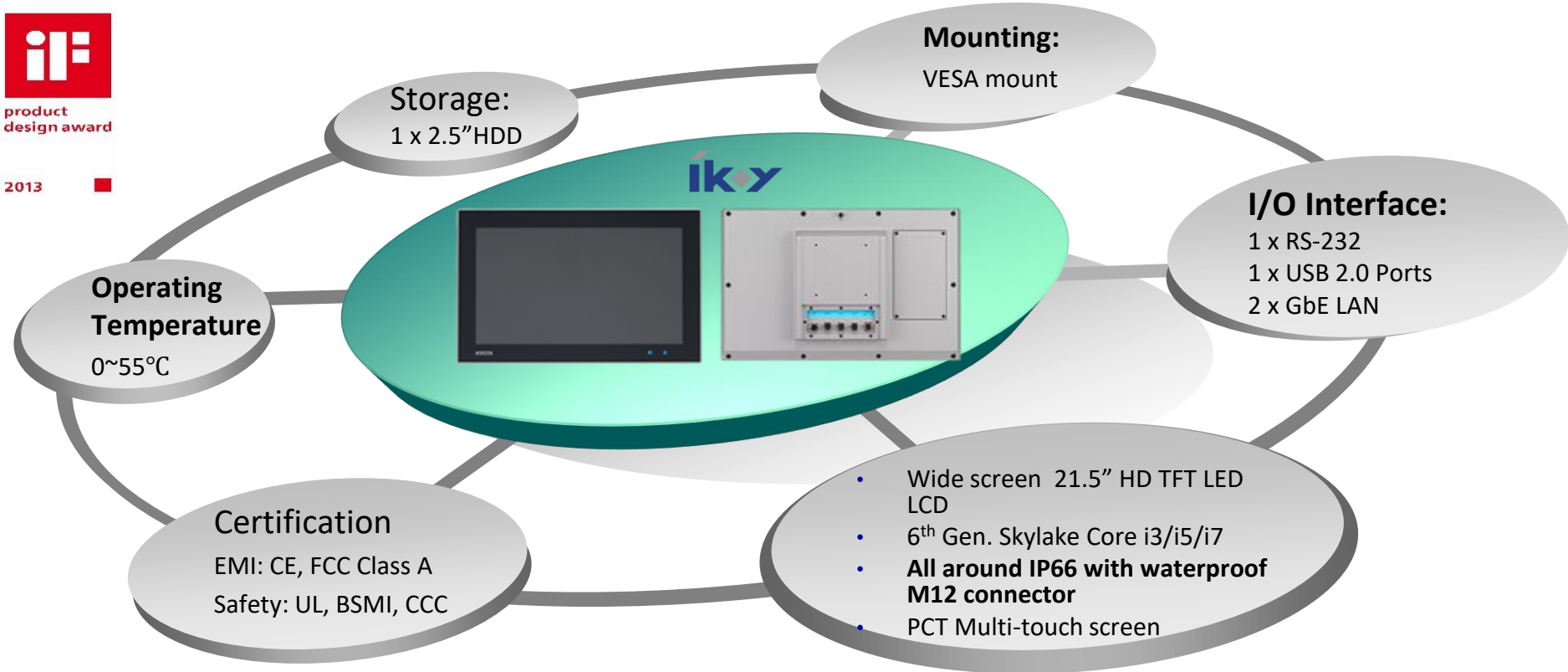
Slim & Compact that can fit it anywhere with All-around protection

SPC-200 Introduction



product
design award

2013



Stationary & Standalone HMI Naming Rule

SPC-X₁X₂X₃-Y₁Y₂Y₃Y₄E

- **X₁: Product Series**
 - 2: General SPC (old SPC-1881/2140)
 - 5: Stainless Steel HMI (align w/ IPPC-5000)
 - 8: Innovative HMI
- **X₂ X₃: LCD panel size**
 - 15: 15" (4:3)
 - 16: 15.6" (16:9)
 - 18: 18.5"
 - 21: 21.5"
 - 24: 23.8"
- **Y₁ Y₂: CPU**
 - ATOM
E1=E39 series(Apollo Lake)
E2, E3....=Exx series
(Predecessor of Apollo Lake, Atom D or N series follow same rules)
 - Core i
Gen. # + Intel® Core™ i3 (63)
Gen. # + Intel® Core™ i7 (67)
- **Y₃: Memory Size**
 - 1/2/3/4/5: 2GB/4GB/8GB/16GB
- **Y₄: Version**
 - A~Z
- **E: RoHS**

Co-Creating the Future of the IoT World

