



## Model list

OS	P/N	Basic Specs
Android	EAGLE-TAB-A0811	8.0"/ 1280 * 800/ 1000 nits/ Qualcomm CPU/ 4G RAM/ 64GB ROM/ Pcap. touch/ GPS/ Wi-Fi/ BT/ NFC/ 3G/4G/ 8500mAh Battery- ANDROID
	EAGLE-TAB-A1011	10.1"/ 1280 * 800/ 1000 nits/ Qualcomm CPU/ 4G RAM/ 64GB ROM/ Pcap. touch/ GPS/ Wi-Fi/ BT/ 3G/4G/ 10000mAh Battery- ANDROID
Windows	EAGLE-TAB-X0820	8.0"/ 1280 * 800/ Intel Z8350/ 4G RAM/ 64GB ROM/ Pcap. touch/ 1* HDMI/GPS/ Wi-Fi/ BT/ 3G/4G/ 8500mAh Battery-WINDOWS 10 IoT
	EAGLE-TAB-X1020	10.1"/ 1280 * 800/ Intel Z8350/ 4G RAM/ 64GB ROM/ Pcap. touch/ 1* HDMI/GPS/ Wi-Fi/ BT/ 3G/4G/10000mAh Battery - WINDOWS 10 IoT
	EAGLE-TAB-X1030	10.1"/ 1280 * 800/ Intel Jasper Lake N5105/ 8G RAM/ 128GB ROM/ Pcap. touch/ 1* HDMI/GPS/ Wi-Fi/ BT/ 3G/4G/860mAh Battery-WINDOWS 10 IoT
	EAGLE-TAB-X1232	12.2"/1920 * 800/ Intel Jasper Lake N5105/ 4G RAM/ 128GB ROM/ Pcap. touch/ 1* HDMI/GPS/ Wi-Fi/ BT/ 4G/5G/ WINDOWS 10 IoT
	EAGLE-TAB-I10A	10.1"/ 1200*1920 /i5-1235U/ RAM 16GB DDR4L/ 128GB SSD/ Pcap. Touch/ 1* HDMI/GPS/ Wi-Fi/ BT/ 4G/ WINDOWS 11 IoT
	EAGLE-TAB-I20A	12.2"/1200*1920/, Intel Corei7-1255U/ 16G RAM/ 128GB ROM/ Pcap. touch/ 1* HDMI/GPS/ Wi-Fi/ BT/ 4G/5G/ -WINDOWS 11 IoT
	EAGLE-TAB-I22J	12.2"/1200*1920/, Intel Corei7-1255U/ 16G RAM/ 128GB ROM/ Pcap. touch/ 1* HDMI/GPS/ Wi-Fi/ BT/ 4G/5G/ -WINDOWS 11 IoT



# EAGLE-TAB-A0811

## 8" Android Rugged Industrial Handheld Tablet PC

### Specification

V3.0

#### Key features:

- 8.0" LCD display, IPS 16:10, WXGA 1280\*800;
- Qualcomm (OCTA Core), 2.0Ghz processor, support Android 9.0;
- 5 points projective capacitive touch, G + G;
- Integrated with 3G/4G all network, Wi-Fi and Bluetooth;
- IP67 protection, meet MIL-STD-810G standard;
- Support GPS/GLONASS, support 13m auto-focus camera;
- Optional 1D/2D scanner, NFC modules;
- 8500 mAh batter, 6~8 hours long utility time.

#### Product Image



## Technical Data

Basic & System	CPU	Qualcomm (OCTA Core), 2.0Ghz
	Memory	Onboard 4GB DDR3
	Storage (ROM)	Onboard 64GB
	OS	Android 9.0
	Dimension	228x 145 x 16.5 (mm)
	Weight	715g (Net weight)
	Color	Black
	Camera	Front 5M Pixel, Rear 13.0M Pixel
	GPS	Support GPS, GLONASS
	NFC	Support ISO/IEC 14443A protocol, card read distance: 3~5cm
	Power	AC 100~240V, 50Hz/60Hz, Output: DC 5V/3A
IO interface	HDMI	1* HDMI 1.4a, Type C interface
	USB	1* Micro USB
	Card	1* Sim card, 1* TF Card (Max. 128GB)
	Audio	1* 3.5mm earphone jack
	Power	1* 3.5mm DC jack
	Dock	1* 12 pins Pogo Pin
Display & Touch	Size/Type	8" IPS 16:10 LCD
	Resolution	1280 * 800 (WXGA)
	Touch	5 points capacitive touch, G+ G
Battery	Type	Build in polymer lithium ion battery
	Capacity	3.7V / 8500 mAh
	Endurance	8 hours (Under 50% sound volume, 50% brightness, play 1080p HD video)
Network	Wi-Fi	2.4G + 5G Dual frequency, Wi-Fi 802.11 (a/b/g/n/ac)
	Bluetooth	BT 4.1 Class 1.5, transmission distance 10m
	3G/4G	LTE FDD: B1/B3/B5/B7/B8/B20
		LTE TDD: B38/B40/B41
		WCDMA: B1/B2/B5/B8
GSM: 2/3/5/8		
Environmental	Operating temp.	-20~+55°C
	Storage temp.	-30~+70°C
	Relative Humidity	95% (Non-condensation)
	IP rating	IP67
Optional function	1D	MOTO SE655E100R: Optical position: 5 mil, Scan speed: 50 times/s
	2D	Zebra SE2707: Optical position: 5 mil, Scan speed: 50 times/s

## Dimension & Interface



## Ordering Information

Part no.	Description
EAGLE-TAB-A0811	8", 1280 * 800, Qualcomm CPU, 4G RAM, 64GB ROM, Pcap. touch, 1* HDMI, 1* Micro USB, Earphone, GPS, NFC, Wi-Fi, BT, 3G/4G, TF card, Sim card, 8500mAh Battery, DC 5V/3A
TAA-1D1	Optional 1D module
TAA-2D1	Optional 2D module

## Optional Accessory



Docking Charger



Hand-strap



Shoulder-strap



Back-strap



Leather Cover



Stylus



Vehicle mount

# EAGLE-TAB-A1011

## 10" Android Rugged Industrial Handheld Tablet PC

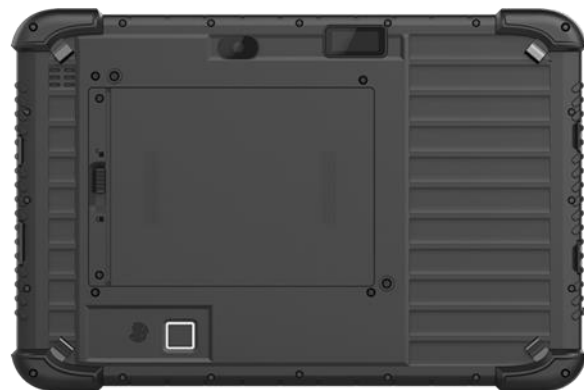
### Specification

V3.0

#### Key features:

- 10.1" LCD display, IPS 16:10, WXGA 1280\*800;
- Qualcomm (OCTA Core), 2.0Ghz processor, support Android 9.0;
- 5 points projective capacitive touch, G + G;
- Integrated with 3G/4G all network, Wi-Fi and Bluetooth;
- IP65 protection, meet MIL-STD-810G standard;
- Support GPS/GLONASS, support 13m auto-focus camera;
- Optional 1D/2D scanner, NFC, Fingerprint modules;
- 10000 mAh batter, 12 hours long utility time.

#### Product Image



## Technical Data

Basic & System	CPU	Qualcomm (OCTA Core), 2.0Ghz
	Memory	Onboard 4GB DDR3
	Storage (ROM)	Onboard 64GB
	OS	Android 9.0
	Dimension	280x 187 x 22 (mm)
	Weight	1014g (Net weight)
	Color	Black
	Camera	Front 5M Pixel, Rear 13.0M Pixel
	GPS	Support GPS, GLONASS
	Power	AC 100~240V, 50Hz/60Hz, Output: DC 5V/3A
IO interface	HDMI	1* HDMI 1.4a, Type C interface
	USB	1* Micro USB
	Card	1* Sim card, 1* TF Card (Max. 128GB)
	Audio	1* 3.5mm earphone jack
	Power	1* 3.5mm DC jack
	Dock	1* 12 pins Pogo Pin
Display & Touch	Size/Type	8" IPS 16:10 LCD
	Resolution	1280 * 800 (WXGA)
	Touch	5 points capacitive touch, G+ G
Battery	Type	Build in polymer lithium-ion battery
	Capacity	3.7V / 10000 mAh
	Endurance	12 hours (Under 50% sound volume, 50% brightness, play 1080p HD video)
Network	Wi-Fi	2.4G + 5G Dual frequency, Wi-Fi 802.11 (a/b/g/n/ac)
	Bluetooth	BT 4.1 Class 1.5, transmission distance 10m
	3G/4G	LTE FDD: B1/B3/B5/B7/B8/B20
		LTE TDD: B38/B40/B41
		WCDMA: B1/B2/B5/B8
GSM: 2/3/5/8		
Environmental	Operating temp.	-20~+55°C
	Storage temp.	-30~+70°C
	Relative Humidity	95% (Non-condensation)
	IP rating	IP65
Optional function	1D	MOTO SE655E100R: Optical position: 5 mil, Scan speed: 50 times/s
	2D	Zebra SE2707: Optical position: 5 mil, Scan speed: 50 times/s
	NFC	Support SO/IEC 14443A, card reading distance: 3 ~ 5cm
	Fingerprint	FPC1020

## Dimension & Interface



## Ordering Information

Part no.	Description
EAGLE-TAB-A1011	10.1", 1280 * 800, Qualcomm CPU, 4G RAM, 64GB ROM, Pcap. touch, 1* HDMI, 1* Micro USB, Earphone, GPS, Wi-Fi, BT, 3G/4G, TF card, Sim card, 10000mAh Battery, DC 5V/3A
TAA-1D1	Optional 1D module
TAA-2D1	Optional 2D module
TAA-NFC	Optional NFC module
TAA-FGP	Optional Fingerprint module

## Optional Accessory



# WINDOWS SERIES

# EAGLE-TAB-X0820

8" Intel Cherry Trail Industrial Handheld Tablet PC

## Specification

V3.0

### Key features:

- 8.0" LCD display, IPS 16:10, WXGA 1280\*800, 1000 nits;
- Intel Cherry Trail Z8350, Quad-core 1.44Ghz processor;
- Multi points projective capacitive touch, G + G;
- Integrated with 3G/4G all network, Wi-Fi and Bluetooth;
- Surface IP67 protection, meet MIL-STD-810G standard;
- Support GPS/GLONASS, Front&rear camera, support 5m auto-focus camera;
- Optional 1D/2D scanner, NFC modules;
- 8500 mAh batter, 8 hours long utility time.

### Product Image





## Technical Data

Basic & System	CPU	Intel Cherry Trail, Z8350, Quad-core 1.44Ghz
	Memory	Onboard 4GB DDR3
	Storage (ROM)	Onboard 64/128 GB
	OS	Windows 10
	Dimension	228x 145 x 16.5 (mm)
	Weight	715g (Net weight)
	Color	Black
	Camera	Front 2M Pixel, Rear 5.0M Pixel
	GPS	Support GPS, GLONASS
	Power	AC 100~240V, 50Hz/60Hz, Output: DC 5V/3A
IO interface	HDMI	1* HDMI 1.4a, Type C interface
	USB	1* Micro USB, 1* USB2.0
	Card	1* Sim card, 1* TF Card (Max. 128GB)
	Audio	1* 3.5mm earphone jack
	Power	1* 3.5mm DC jack
	Dock	1* 12 pins Pogo Pin
Display & Touch	Size/Type	8" IPS 16:10 LCD
	Resolution	1280 * 800 (WXGA)
	Touch	Multi-points capacitive touch, G+ G
Battery	Type	Build in polymer Lithium-ion battery
	Capacity	3.7V / 8500 mAh
	Endurance	8 hours (Under 50% sound volume, 200nits brightness, play 1080p HD video)
Network	Wi-Fi	2.4G + 5.8G Dual frequency, Wi-Fi 802.11 (a/b/g/n/ac)
	Bluetooth	BT 4.2 (BLE) Class 1, transmission distance 10m
	3G/4G	LTE FDD: B1/B3/B5/B7/B8/B20/B28A
		LTE TDD: B38/B40/B41
		WCDMA: B1/B2/B5/B8
GSM: 850/900/1800/1900 Mhz		
Environmental	Operating temp.	-20~+60°C
	Storage temp.	-30~+70°C
	Relative Humidity	95% (Non-condensation)
	IP rating	IP67
Optional function	NFC	Support ISO/IEC 14443A/14443B/15693/18092/Mifare protocol, card reading distance: 4cm
	1D	MOTO SE655E100R: Optical position: 5 mil, Scan speed: 50 times/s
	2D	MOTO SE4710: Optical position: 5 mil, Scan speed: 50 times/s

### Dimension & Interface



### Ordering Information

Part no.	Description
EAGLE-TAB-X0820	8", 1280 * 800, Intel Z8350, 4G RAM, 64/128GB ROM, Pcap. touch, 1* HDMI, 1* Micro USB, 1*USB2.0, Earphone, GPS, Wi-Fi, BT, 3G/4G, TF card, Sim card, 8500mAh Battery, DC 5V/3A
TAA-NFC	Optional NFC module
TAA-1D1	Optional 1D module
TAA-2D1	Optional 2D module

### Optional Accessory



Docking Charger



Hand-strap



Shoulder-strap



Back-strap



Leather Cover



Stylus



Vehicle mount

# WINDOWS SERIES

# EAGLE-TAB-X1020

10.1” Intel Cherry Trail Industrial Handheld Tablet PC

## Specification

V3.0

### Key features:

- 10.1” LCD display, IPS 16:10, WXGA 1280\*800, 1000 nits;
- Intel Cherry Trail Z8350, Quad-core 1.44Ghz processor;
- Multi 10 points projective capacitive touch, G + G;
- Integrated with 3G/4G all network, Wi-Fi and Bluetooth;
- IP65 protection, meet MIL-STD-810G standard;
- Support GPS/GLONASS, Front&rear camera, support 5m auto-focus camera;
- Optional 1D/2D scanner, NFC, ID card modules;
- 10000 mAh batter, 10 hours long utility time.

### Product Image



## Technical Data

Basic & System	CPU	Intel Cherry Trail, Z8350, Quad-core 1.44Ghz
	Memory	Onboard 4GB DDR3
	Storage (ROM)	Onboard 64GB
	OS	Windows 10
	Dimension	280x 187 x 22 (mm)
	Weight	1014g (Net weight)
	Color	Black
	Camera	Front 2M Pixel, Rear 5.0M Pixel
	GPS	Support GPS, GLONASS
	Power	AC 100~240V, 50Hz/60Hz, Output: DC 5V/3A
IO interface	HDMI	1* HDMI 1.4a, Type C interface
	USB	1* Micro USB, 1* USB2.0
	COM	1* RS232
	Ethernet	1* RJ45 (10/100 Mbps)
	Card	1* Sim card, 1* TF Card (Max. 128GB)
	Audio	1* 3.5mm earphone jack
	Power	1* 3.5mm DC jack
	Dock	1* 12 pins Pogo Pin
Display & Touch	Size/Type	10.1" IPS 16:10 LCD
	Resolution	1280 * 800 (Optional 1920*1200)
	Touch	Multi 10-points capacitive touch, G+ G
Battery	Type	Build in Li-polyment removeable battery
	Capacity	3.7V / 10000 mAh
	Endurance	8 hours (Under 50% sound volume, 200nits brightness, play 1080p HD video)
Network	Wi-Fi	2.4G + 5.8G Dual frequency, Wi-Fi 802.11 (a/b/g/n/ac)
	Bluetooth	BT 4.2 (BLE) Class 1, transmission distance 10m
	3G/4G	LTE FDD: B1/B3/B5/B7/B8/B20/B28A
		LTE TDD: B38/B40/B41
		WCDMA: B1/B2/B5/B8
GSM: 850/900/1800/1900 Mhz		
Environmental	Operating temp.	-20~+60°C
	Storage temp.	-30~+70°C
	Relative Humidity	95% (Non-condensation)
	IP rating	IP65
Optional function	NFC	Support ISO/IEC 14443A/14443B/15693/18092/Mifare protocol, card reading distance: 4cm
	1D	MOTO SE655E100R: Optical position: 5 mil, Scan speed: 50 times/s
	2D	Honeywell N3680: Optical position: 5 mil, Scan speed: 50 times/s
	Fingerprint	FPC1020 (Sensor, compression type of capacitance)

## Dimension & Interface



## Ordering Information

Part no.	Description
EAGLE-TAB-X1020	8", 1280 * 800, Intel Z8350, 4G RAM, 64GB ROM, Pcap. touch, 1* HDMI, 1* Micro USB, 1*USB2.0, Earphone, GPS, Wi-Fi, BT, 3G/4G, TF card, Sim card, 8500mAh Battery, DC 5V/3A
TAA-NFC	Optional NFC module
TAA-FGP	Optional Fingerprint module
TAA-1D1	Optional 1D module
TAA-2D1	Optional 2D module

## Optional Accessory



# EAGLE-TAB-X1030

## 10.1" Intel Celeron N5105 Handheld Tablet PC

### Specification

V3.0

#### Key features:

- 10.1" LCD display, IPS 16:10, 1280\*800/1920\*1200, 1000 nits;
- Intel Celeron N5105, Quad-core 2.0Ghz processor;
- Multi 10 points projective capacitive touch, G + G;
- Integrated with 3G/4G all network, Wi-Fi and Bluetooth;
- IP65 protection, meet MIL-STD-810G standard;
- Support GPS/GLONASS/Beidou, Front&rear camera, support 8m auto-focus camera;
- Optional RJ45/COM/USB3.0/2D extension modules (4 choose 1);
- Dual-battery, Built-in 860 mAh batter, detachable 5000mAh polymer lithium-ion battery.

#### Product Image



## Technical Data

Basic & System	CPU	Intel Celeron N5105, Quad-core 2.0Ghz
	Memory	Onboard 8GB
	Storage (ROM)	Onboard 128GB
	OS	Windows 10
	Dimension	289.9x 196.7 x 27.4 (mm)
	Weight	1140g (Net weight)
	Color	Black
	Camera	Front 2M Pixel, Rear 8.0M Pixel
	GPS	Support GPS, GLONASS, Beidou
	NFC	Optional
	Power	AC 100~240V, 50Hz/60Hz, Output: DC 19V/3.42A
IO interface	HDMI	1* HDMI 1.4a
	USB	1* USB3.0, 1* Type-A, 1* USB type-C
	Card	1* Sim card, 1* TF Card (Max. 128GB)
	Audio	1* 3.5mm earphone jack
	Power	1* 3.5mm DC jack
	Dock	1* 12 pins Pogo Pin
Display & Touch	Size/Type	10.1" IPS 16:10 LCD
	Resolution	1280*800 (Optional 1920*1200)
	Touch	Multi 10-points capacitive touch, G+ G
Battery 1	Type	Build in Li-polymer battery
	Capacity	7.4V / 860 mAh
	Endurance	30 mins (Under 50% sound volume, 200nits brightness, play 1080p HD video)
Battery 2	Type	Removeable Li-polymer battery
	Capacity	7.4V/5000 mAh
	Endurance	5 hours (Under 50% sound volume, 200nits brightness, play 1080p HD video)
Network	Wi-Fi	2.4G + 5.8G Dual frequency, Wi-Fi 802.11 (a/b/g/n/ac)
	Bluetooth	BT 4.2 (BLE) Class 1, transmission distance 10m
	3G/4G	LTE FDD: B1/B3/B5/B7/B8/B20/B28A
		WCDMA: B1/B8
	GSM: B3/B8	
Environmental	Operating temp.	-20~+60°C
	Storage temp.	-30~+70°C
	Relative Humidity	95% (Non-condensation)
	IP rating	IP65
Module extension (4 choose 1)	Ethernet	1* RJ45 (10/100/1000 M)
	COM	1* RS232 (DB9)
	USB	1* USB3.0
	2D	EM80, Optical resolution 5 mil, scan speed: 50 times/s

## Dimension & Interface



## Ordering Information

Part no.	Description
EAGLE-TAB-X1030	10.1", 1920 * 800, Intel Core i7-8550U, RAM/ROM, Pcap. touch, 1* HDMI, 1*USB3.0, Earphone, GPS, Wi-Fi, BT, 3G/4G, TF card, Sim card, 860mAh Battery, DC 19V/3.42A
TAA-NFC	Optional NFC module
TAA-ERJ	Optional RJ45 ethernet extension module
TAA-RSD	Optional RS232 (DB9) extension module
TAA-2D1	Optional 2D module

## Optional accessory



Docking Charger



Hand-strap



Vehicle mount



Car charger



Removable Battery



Carry handle



## EAGLE-TAB-X1232

6 views






### Tech Spec

Product Form	12.2 inch 2 in 1 Rugged Notebook	
Material	-	
Dimension	319.6*216*24.3 mm	
Weight	1500g	
Product Color	Black+black (black bottom shell, black front shell) Optional, Silver bottom shell	
CPU	Intel JASPER LAKE N5100 processor, 4-core 4-thread, embedded 4 MB SmartCache, TDP 6W, max frequency	
GPU	Intel® HD Graphics Gen 11 LP	
Memory	RAM 8GB 128GB EMMC Optional: 4GB/16GB 64G/256G/512G	ROM  Optional:
Operating System	Windows 11 IOT Optional: Windows 11 (HOME PRO)	

Display	Type: IPS Optional Size: 12.2 inch 16:10 12.2 inch 16:10 Resolution: 1920*1200 1920*1200
Touch Pannel	10 point capacitive screen, G+G, Corning gorilla hardness above 7H, scratch resistant, support 930 handwriting
Camera	Front 5.0MP (MIPI) Rear 8.0MP (MIPI)
Buttons	Power *1 Volume Adjustment Key (+) *1 Volume Adjustment Key (-) *1 P1 Key *1 (Windows home ) P2 Key *1 (Control panel) F Key *1 (Barcode scanner) (Back of machine)
Indicator Light	Power on indicator (blue indicator) *1 Charging indicator lamp (R/G two-color lamp) *1 4G indicator light (blue indicator light) *1
Speaker	8Ω/1W Waterproof BOX Speaker *2
Microphone	Sensitivity: -42db, Output Impedance 2.2kΩ
Battery (Large)	Removable Li-polyment Battery 7.4V/6300mAh (Support hot plug) 8.5hours ( 50% volume sounds, 50% screen brightness, 1080P HD video display by default )
Battery (Small)	Built in Li-polyment Battery 7.4V/1000mAh 1hour ( 50% volume sounds, 200 nits brightness, 1080P HD video display by default )
RTC	CR2032 dry cell. 3.0V, 210mAh, working temperature: - 20 ~ 60 °C, about 3.0g Optional: 3V 1mAh patch can be charged 4.8 * 4.8 * 1.7mm
TPM	Built in TPM SLB9670VQ2.0 FW7.85

WIFI	WIFI 802.11(a/b/g/n/ac) Dual frequency 2.4G+5.8G WIFI
Bluetooth	BT5.0 (BLE) class1 Transmitted distance: 10m
2G/3G/4G	MeiG 750 VE LTE-FDD: B1/3/5/7/8/20 LTE-TDD: B40 WCDMA: B1/5/8 GSM: 900/1800 China (Unicom, mobile support is poor, only B8 supports without TDD band) Europe, Middle East, Africa, Taiwan, Japan Optional, South America or North America module
5G	Optional, SRM825N M. 2, 52*30*2.3mm, 5G Sub-6GHz, SA&NSA:N1/N3/N5/N7/N8/N20/N28/N38/N40/N41/N71/N77/N78/N79 5G SA&NSA: LTE-FDD:B1/B3/B5/B7/B8/B18/B19/B20/B28/B32 LTE-TDD:B34/B38/B39/B40/B41/B42 WCDMA:B1/B5/B8 5G SA&NSA: LTE-FDD:B1/B3/B5/B8/B28 LTE-TDD:B34/B38/B39/B40/B41 WCDMA:B1/B8 N1/N28/N41/N78/N79
GPS	Support GPS, Glonass
ID	Optional, MOTO SE655
2D	Optional, N3680
NFC	Optional, NXP300
I/O Interface	USB 2.0 *1 (4pin) (Host) for windows (0.5A)
	USB 3.0 *2
	Type C *1 (USB3.0, Charging, Audio and Video)
	φ 3.5mm standard earphone jack *1
	TF Card *1 max: 512G
	SIM Card *1
	DC 19V/3.42A φ 4mm Power connector *1
	HDMI 2.0a mini *1
DB9 (RS232) *1, DB9 (RS485) *1	

	RJ45 (100Mbps) *1
	12PIN Pogo Pin (Support Vehicle Mount, Docking Charger and Keyboard) *1
	USB (Reserved interface of mainboard)
	Serial port (Reserved interface of mainboard)
Adapter	19V3.42A $\phi$ 4.0mm Adapter (EU) Optional: (EU, US, CN, EN) Choose one of four
Rugged Features	MIL-STD-810G: 1.22m drop
	Working temperature: -20 ° C to 60 ° C
	Storage temperature: -30 ° C to 70 ° C
	Electrostatic discharge: $\pm$ 8kV contact discharge, $\pm$ 15kV air discharge
	Humidity: 95% Non-Condensing
Certification	IP65
	CE-NB
	MIL-STD-810G
	CCC
	FCC
	Battery: UN38.3, MSDS, aviation, marine report, IEC62133
Hand-strap	
Carry handle	
Bracket	

Accessories

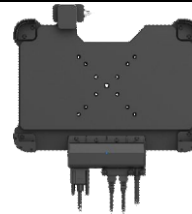
19V3.42A Adapter (Standard)



Docking Charger DC22J (Optional)



Vehicle Mount VJM22 (Optional)



Removable Battery (Optional)



Removable keyboard (Optional)



Shoulder-strap (Optional)



Back-strap (Optional)



Car Charge (Optional)



## EAGLE-TAB-I10A

6 views





### Tech Spec

Product Form	10.1 inch Rugged Tablet
Material	ABS+PC
Dimension	289.9*196.7*27.4mm
Weight	1230g
Product Color	Black
CPU	i5-1235U, TDP15W, 2P-Cores, 10E-Cores, 12threads, 0.9GHz~4.4GHz Optional: i7-1255U, TDP15W, 2P-Cores, 10E-Cores, 12threads, 1.2GHz~4.7GHz
GPU	Intel® Iris® Xe Graphics eligible
Memory	RAM 16GB DDR4L ROM 128GB SSD
Operating System	Windows 11 Pro (Home, IOT) 64bit, Language by default: English Optional: Windows 10 IOT 64bit Windows 10 Pro 64bit Windows 10 Home 64bit

Display	Type: LCD Size: 10.1 inch 16:10 Resolution: 1200*1920 Brightness: 700cd/m <sup>2</sup>
Touch Pannel	10 points capacity TP, G+F+F, Hardness over 7H, Scratch resistant, Support stylus
Camera	Front 2.0MP (USB) Rear 8.0MP (USB)
Buttons	Power *1 Volume Key + *1 Volume Key - *1 Windows Home *1 F Key *1 (Barcode Scanning, Customizable without barcode)
Speaker	8Ω/1W Waterproof Speaker *1
Microphone	Waterproof microphone 4618, specification:-44dB±3DB
Sensors	G_sensor
Fan	IPX5 Fan *1
RTC Battery	3V 210mAH Continuous discharge current: 0.2mA Diameter: Ø20.0mm Max Thickness: 3H.2mm
Small Battery	Build in Lithium-ion polymer battery, Non-removable 7.4V/700mAh
Big Battery	Removable Li-polyment Battery 7.4V/5000mAh 4.5h ( 50% volume sounds, 50% screen brightness, 1080P HD video display by default )
WIFI	Wi-Fi 6 802.11a, b, d, e, g, h, i, k, n, r, u, v, w, ac, ax Dual frequency 2.4G+5.8G WIFI

Bluetooth	BT5.1 (BLE) class1 Transmitted distance: 10m
4G	MeiG 750 LTE-FDD: B1/3/5/7/8/20 LTE-TDD: B40 WCDMA: B1/5/8 GSM: 900/1800 China (Unicom, mobile support is poor, only B8 supports without TDD band) Europe, Middle East, Africa, Taiwan, Japan Optional: MeiG North America and South America modules
GPS	U-blox M7N, Support: GPS, glonass Optional: U-blox M8Q, Support: GPS, Beidou, glonass
I/O Interface	USB3.1 *1
	Type C (Full function/HDMI/Charging) *1
	ϕ 3.5mm Standard earjack *1
	HDMI 2.1a mini *1
	SIM card *1
	TF card *1, Max: 128GB
	DC 19V 3.42A jack *1
Adapter	AC100V ~ 240V, 19V 3.42A/65W Output          USA Standard CE approval Optional: EU UK
Rugged Features	MIL-STD-810G: 1.22m drop
	Working temperature: -20 ° C to 60 ° C
	Storage temperature: -30 ° C to 70 ° C
	Electrostatic discharge: ± 8kV contact discharge, ± 15kV air discharge
	Humidity: 95% Non-Condensing
Certification	IP65
	CE
	CCC
	MIL-STD-810G



Battery: UN3803, MSDS, IEC62133, aviation report, marine report	
Data Collection	NFC Optional NXP300 NXP NFC 13.56MHz supports 14,443A/14,443B/15,693/18,092/mobile protocol under ISO/IEC. Card reading distance: 4cm
	Fingerprint Built-in
Expansion Module <b>(1 out of 4)</b>	RJ45 board (Standard) (10/100/1000M) network port * 1, supporting customized (10/100/1000M) gigabit network speed network port
	DB9 board (RS232) *1, 9-line full function
	USB2.0 USB2.0 *1, Big USB
	QR Code Scanner N3680 hardcode, Optical resolution: 5mil, scan speed: 50 times/s
	<p><b>Hand-strap</b></p> 
	<p><b>Carry Handle</b></p> 

Accessories

19V 3.42A Adapter



Docking Charger DC10U (Optional)



Vehicle Mount VHM10 (Optional)



Removable Battery (Optional)



Quad charging MDC10J (Optional)



## EAGLE-TAB-I20A

6 views



### Tech Spec

**Product Form** 12.2 inch Rugged Tablet

**Material** -

**Dimension** 339.3\*230.3\*26 mm

**Weight** 1500g

**Product Color** Black + Black

**CPU** i7-1255U, TDP15W, 2P-Cores, 8E-Cores, 12threads, 1.2GHz~4.7GHz

**GPU** Intel® Iris® Xe Graphics eligible

**Memory** RAM 16GB DDR4L ROM 128GB SSD

**Operating System** Windows 11 PRO (HOME, IOT) 64bit, Language by default: English

Optional:  
Windows 10 IOT 64bit  
Windows 10 Pro 64bit  
Windows 10 Home 64bit

Display	Type: LCD Size: 12.2 inch 16:10 Resolution: 1200*1920 Brightness: 650cd/m <sup>2</sup>
Touch Pannel	10 points capacity TP, G+G, Hardness over 7H, Scratch resistant, Support stylus Optional 10 points capacity TP, G+G, Hardness over 7H, Scratch resistant, Support glove touch
Camera	Front 2.0MP Rear 8.0MP (USB)
Buttons	Power *1 Volume Key + *1 Volume Key - *1 Windows Home *1 F Key *1 (Barcode Scanning, Customizable without barcode)
Speaker	8Ω/1W Waterproof Speaker *1
Microphone	Sensitivity: - 44dB±3DB
Sensors	G_sensor
Fan	IPX5 Fan *1
RTC Battery	3V 210mAH Continuous discharge current: 0.2mA Diameter: Ø20.0mm Max Thickness: 3H.2mm
Small Battery	Build in Lithium-ion polymer battery, Non-removable 7.4V/700mAh 30mins ( 50% volume sounds, 200 nits brightness, 1080P HD video display by default )
Big Battery	Removable Li-polyment Battery 7.4V/6300mAh 4.5hrs ( 50% volume sounds, 50% screen brightness, 1080P HD video display by default )
WIFI	Wi-Fi 6 802.11a, b, d, e, g, h, i, k, n, r, u, v, w, ac, ax Dual frequency 2.4G+5.8G WIFI

Bluetooth	BT5.1 (BLE) class1 Transmitted distance: 10m
4G	MeiG 750 VE LTE-FDD: B1/3/5/7/8/20 LTE-TDD: B40 WCDMA: B1/5/8 GSM: 900/1800 China (China Unicom Telecom, mobile support is not good, only B8 supports no TDD band) Europe, Middle East, Africa, Taiwan, Japan Optional: MeiG North America and South America modules
5G	Optional SRM825N M.2, 52*30*2.3mm, 5G Sub-6GHz,。 -EA: Region: EMEA, Australia, Japan, Korea 5G SA&NSA: LTE-FDD: B1/B3/B5/B7/B8/B18/B19/B20/B28/B32 LTE-TDD: B34/B38/B39/B40/B41/B42 WCDMA: B1/B5/B8 N1/N3/N5/N7/N8/N20/N28/N38/N40/N41/N71/N77/N78/N79
GPS	U-blox M7N, Support: GPS, glonass Optional: U-blox M8Q, Support: GPS, Beidou, glonass
I/O Interface	USB3.0 *1
	Type C (USB3.0/HDMI/Charging) *1
	φ 3.5mm Standard earjack *1
	HDMI 2.1a mini *1
	SIM card *1
	TF card *1, Max: 128GB
	DC 19V 3.42A jack *1
	12PIN Pogo Pin (USB/Docking charging) *1
Adapter	AC100V ~ 240V, 19V 3.42A/65W Output          USA Standard CE approval Optional: EU UK
Power Indicator	1. Power on, power indicator always on 2. Shut down and the power indicator is off 3. Sleep, power indicator flashes 4. When the battery switch is turned to A and the adapter is not connected, the power indicator flashes

Battery Indicator	<p>1. During charging, the charging indicator is always on (red)</p> <p>2. When the charge is full, the charging indicator is always on (blue)</p> <p>3. If the large battery is disconnected, the charging indicator will flash (red)</p>
Rugged Features	MIL-STD-810G: 1.22m drop
	Working temperature: -20 ° C to 60 ° C
	Storage temperature: -30 ° C to 70 ° C
	Electrostatic discharge: ± 8kV contact discharge, ± 15kV air discharge
	Humidity: 95% Non-Condensing
Certification	IP65
	CE
	CCC
	MIL-STD-810G
	Battery: UN3803, MSDS, IEC62133, aviation report, marine report
Data Collection	<p>NFC</p> <p>Optional, NXP300</p>
	<p>Fingerprint</p> <p>Built-in</p>
Expansion Module (1 out of 4)	<p>RJ45 board</p> <p>(10/100/1000M) Ethernet interface *1</p>
	<p>DB9 board</p> <p>(RS232) *1, 9-line full function</p>
	<p>USB2.0</p> <p>USB2.0 *1, Big USB</p>
	<p>QR Code Scanner</p> <p>N3680 hardcode, Optical resolution: 5mil, scan speed: 50 times/s</p>

Accessories

Hand-strap



Carry Handle



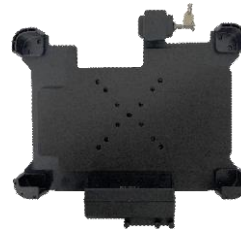
19V 3.42A Adapter



Docking Charger DC10U (Optional)



Vehicle Mount VHM20 (Optional)



Stylus (Optional)



Removable Battery (Optional)



Quad charging MDC20J (Optional)





## EAGLE-TAB-I22J

6 views




### Tech Spec

Product Form	12.2 inch 2 in 1 Rugged Notebook	
Material	-	
Dimension	319.6*216*24.3 mm	
Weight	1500g	
Product Color	Black+black (black bottom shell, black front shell) Optional, Silver bottom shell	
CPU	Intel JASPER LAKE N5100 processor, 4-core 4-thread, embedded 4 MB SmartCache, TDP 6W, max frequency	
GPU	Intel® HD Graphics Gen 11 LP	
Memory	RAM 8GB 128GB EMMC Optional: 4GB/16GB 64G/256G/512G	ROM  Optional:
Operating System	Windows 11 IOT Optional: Windows 11 (HOME PRO)	

Display	Type: IPS Size: 12.2 inch 16:10 Resolution: 1920*1200 Brightness: 650cd/m <sup>2</sup> Optional: 80cd/m <sup>2</sup> (Optional SLR sunlight visible film)
Touch Panel	10 point capacitive screen, G+G, Corning gorilla hardness above 7H, scratch resistant, support 930 handwriting
Camera	Front 5.0MP (MIPI) Rear 8.0MP (MIPI)
Buttons	Power *1 Volume Adjustment Key (+) *1 Volume Adjustment Key (-) *1 P1 Key *1 (Windows home ) P2 Key *1 (Control panel) F Key *1 (Barcode scanner) (Back of machine)
Indicator Light	Power on indicator (blue indicator) *1 Charging indicator lamp (R/G two-color lamp) *1 4G indicator light (blue indicator light) *1
Speaker	8 Ω /1W Waterproof BOX Speaker *2
Microphone	Sensitivity: -42db, Output Impedance 2.2k Ω
Battery (Large)	Removable Li-polyment Battery 7.4V/6300mAh (Support hot plug) 8.5hours ( 50% volume sounds, 50% screen brightness, 1080P HD video display by default )
Battery (Small)	Built in Li-polyment Battery 7.4V/1000mAh 1hour ( 50% volume sounds, 200 nits brightness, 1080P HD video display by default )
RTC	CR2032 dry cell. 3.0V, 210mAh, working temperature: - 20 ~ 60 °C, about 3.0g Optional: 3V 1mAh patch can be charged 4.8 * 4.8 * 1.7mm

TPM	Built in TPM SLB9670VQ2.0 FW7.85
WIFI	WIFI 802.11(a/b/g/n/ac) Dual frequency 2.4G+5.8G WIFI
Bluetooth	BT5.0 (BLE) class1 Transmitted distance: 10m
2G/3G/4G	MeiG 750 VE LTE-FDD: B1/3/5/7/8/20 LTE-TDD: B40 WCDMA: B1/5/8 GSM: 900/1800 China (Unicom, mobile support is poor, only B8 supports without TDD band) Europe, Middle East, Africa, Taiwan, Japan Optional, South America or North America module
5G	Optional, SRM825N M. 2, 52*30*2.3mm, 5G Sub-6GHz, SA&NSA:N1/N3/N5/N7/N8/N20/N28/N38/N40/N41/N71/N77/N78/N79 5G SA&NSA: LTE-FDD:B1/B3/B5/B7/B8/B18/B19/B20/B28/B32 LTE-TDD:B34/B38/B39/B40/B41/B42 WCDMA:B1/B5/B8 5G SA&NSA: LTE-FDD:B1/B3/B5/B8/B28 LTE-TDD:B34/B38/B39/B40/B41 WCDMA:B1/B8 N1/N28/N41/N78/N79
GPS	Support GPS, Glonass
1D	Optional, MOTO SE655
2D	Optional, N3680
NFC	Optional, NXP300
I/O Interface	USB 2.0 *1 (4pin) (Host) for windows (0.5A)
	USB 3.0 *2
	Type C *1 (USB3.0, Charging, Audio and Video)
	φ 3.5mm standard earphone jack *1
	TF Card *1 max: 512G
	SIM Card *1
	DC 19V/3.42A φ 4mm Power connector *1

	HDMI 2.0a mini *1
	DB9 (RS232) *1, DB9 (RS485) *1
	RJ45 (100Mbps) *1
	12PIN Pogo Pin (Support Vehicle Mount, Docking Charger and Keyboard) *1
	USB (Reserved interface of mainboard)
	Serial port (Reserved interface of mainboard)
Adapter	19V3.42A $\phi$ 4.0mm Adapter (EU) Optional: (EU, US, CN, EN) Choose one of four
Rugged Features	MIL-STD-810G: 1.22m drop
	Working temperature: -20 ° C to 60 ° C
	Storage temperature: -30 ° C to 70 ° C
	Electrostatic discharge: $\pm$ 8kV contact discharge, $\pm$ 15kV air discharge
	Humidity: 95% Non-Condensing
Certification	IP65
	CE-NB
	MIL-STD-810G
	CCC
	FCC
	Battery: UN38.3, MSDS, aviation, marine report, IEC62133
	Hand-strap (Standard) 

Accessories

Carry handle (Standard)



Bracket (Standard)



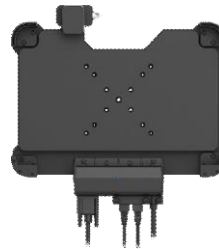
19V3.42A Adapter (Standard)



Docking Charger DC22J (Optional)



Vehicle Mount VJM22 (Optional)



Removable Battery (Optional)



Removable keyboard (Optional)



Shoulder-strap (Optional)



Back-strap (Optional)



Car Charge (Optional)



---

Erreuno srl  
43058 – Via Novella 13 – Sorbolo Mezzani (PR) - Italy  
[WWW.ERRE1.IT](http://WWW.ERRE1.IT)  
[INFO@ERRE1.IT](mailto:INFO@ERRE1.IT)