

PHILIPS

Signage Solutions

H1 2015



A signage experience
beyond the ordinary



Welcome to Philips **Signage Solutions**



The right message, at the right time

Whatever business you are in, it always pays to look professional. That is why, when you are choosing signage solutions, you want to choose the best. Making use of leading technologies we have developed impactful signage solutions that bring innovation to your business.

Our latest generation Signage Solutions offer best in class picture performance, while focusing on convenience for integrators and total cost of ownership for end users. With this broad range of professional displays we are dedicated to meet the highest quality standards and operational excellence. And you can see that commitment clearly in everything we do. Enjoy taking a closer look at what Philips Signage Solutions has to offer.



Next generation of digital signage

Each application is unique. We developed our SmartCollection to offer you customizable solutions to meet your specific requirements. Both integrators and solution providers are offered the latest innovations, while the audience can enjoy impactful solutions. When developing smart innovations we focus on three key ingredients:

Caring

Care about your business, and your audience. Our focus on the success of your business and your audience's satisfaction resulted in true long-term partnerships based on reliability, trust and excellence.

Innovative

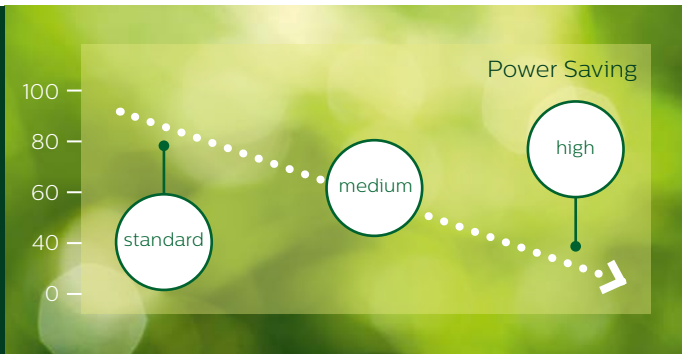
Innovative solutions ensure the right message at the right time. We provide built-in capability to support customized applications and services through a wide array of system integrators and service providers.

Impactful

Maximizing the impact of your message. We understand you and your audience expect impressive viewing experience, greater customization and flexibility, that is why we help you to build impactful signage solutions.

SmartCollection





Reduce your total cost of ownership up to 50%

All our professional displays offer SmartPower functionality which enables you to save costs and reduce your carbon footprint. The backlight intensity can be controlled and pre-set

by the system to reduce the power consumption by up to 50%. Considering the lifetime of your network, SmartPower will save substantially on your energy costs.



Keep your content up and running with FailOver

Keeping your content up and running is critical for demanding commercial applications. FailOver provides 24/7 protection with a revolutionary technology that plays back-up content on screen in the event of a media player failure.

FailOver automatically kicks in when the primary input fails. Simply select a primary input connection and a FailOver connection (USB, VGA, HDMI, DVI or DisplayPort) and you are ready for instant protection.



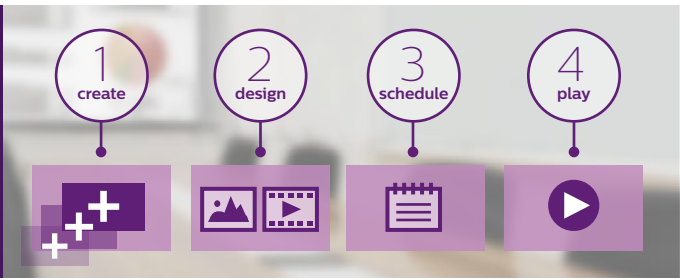
Show clinical images consistently with high quality

D-image helps you to review and diagnose clinical images with consistent and accurate display performance. To achieve reliable clinical interpretations our professional displays are

factory calibrated to give optimized greyscale standard display performance. D-image helps you to excel in every aspect of patient care.

 **SmartCMS**

SmartCMS >



Your free and perfect simple content management solution

Free and easy-to-use content management software that works exclusively with Philips Signage Solutions displays to manage your digital signage content. With SmartCMS you can

create and schedule your own content over 24 hours every day. Simply create your network, design your content, schedule your playlist and you are ready to play!

 **HTML5**

HTML5 >



Connect and control your content via the cloud

Connect and control your content via the cloud with the integrated HTML5 browser. Design your signage content online and connect with a single display or with your complete

network. Simply plug in a RJ45 internet cable for network connection, connect the display with the dedicated url-address and you are ready to play your cloud based content.

 **SmartPlayer**

SmartPlayer >



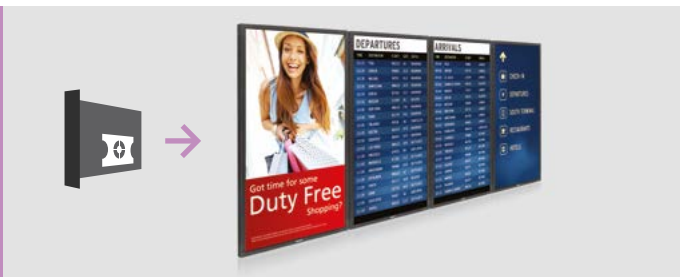
Playback what you want, when you want

Turn your USB into a true cost effective digital signage device. Simply save your content (video, audio, pictures) on your USB and plug into your display.

Create your playlist and schedule your content via the on screen menu, and enjoy your own created playlists anytime, anywhere.

 **OPSInsert**

OPS Insert >



All-in-one digital signage solution

Turn your display into an all-in-one digital signage solution and create a display network which is connected, intelligent and secure. Open Pluggable Specification (OPS) is an industry

standard slot into which you can add an OPS-standardized media player. This cable free solution gives you the ability to install, use or maintain your hardware whenever you need.



Smart Control



Connect & Control your network from a single location

Connect and control with your entire display network from a central admin computer. SmartControl is display-based software to manage your network of displays from a single

location via RJ45 and RS232. Easily identify your displays and fine-tune all display settings including resolution, brightness, contrast and SmartPower.

4K ULTRAHD

Ultra HD



Ultimate Signage performance in Ultra HD

Experience your Signage Solutions like never before thanks to four times the resolution of a conventional Full HD display.

3840 x 2160 pixels provide an image so refined, so lifelike, it's a window to a new world.



Plug & Play Multi-Touch

Multi-Touch



Experience amazing interactivity

A brand new level of interactivity is now available thanks to integrated touch technology. More flexibility and optimum simultaneous touch performance coupled with excellent operability opportunities to give you the ultimate in user

interaction. The Multi-Touch displays are enabled with automatic touch recognition. The USB connector is HID compliant, providing true plug-and-play operation.


UltraNarrow
 Bezel

UltraNarrow Bezel

>



Immersive visual experience

The next generation of video wall displays is designed with industry narrowest bezels and advanced alignment solutions. Fully exploit your impactful signage content with ultra narrow

bezel displays, and make sure your message does not get lost by thick bezels. With the ultra narrow bezels you can create seamless video wall configurations of virtually any size.


Advanced Colour Calibration

Colour Calibration

>



Ensure perfect and uniform colours

The Advanced Colour Calibration kit controls the luminance of the backlight, standardizes the gamma curve and calibrates the greyscale of your display network. Whether you have an impressive video wall, a catchy mosaic layout, a menu board

installation or a control room each single display can be adjusted to the same colour values. With this optional kit you ensure consistent colour performance over all displays in your network.


HDBT

HDBaseT

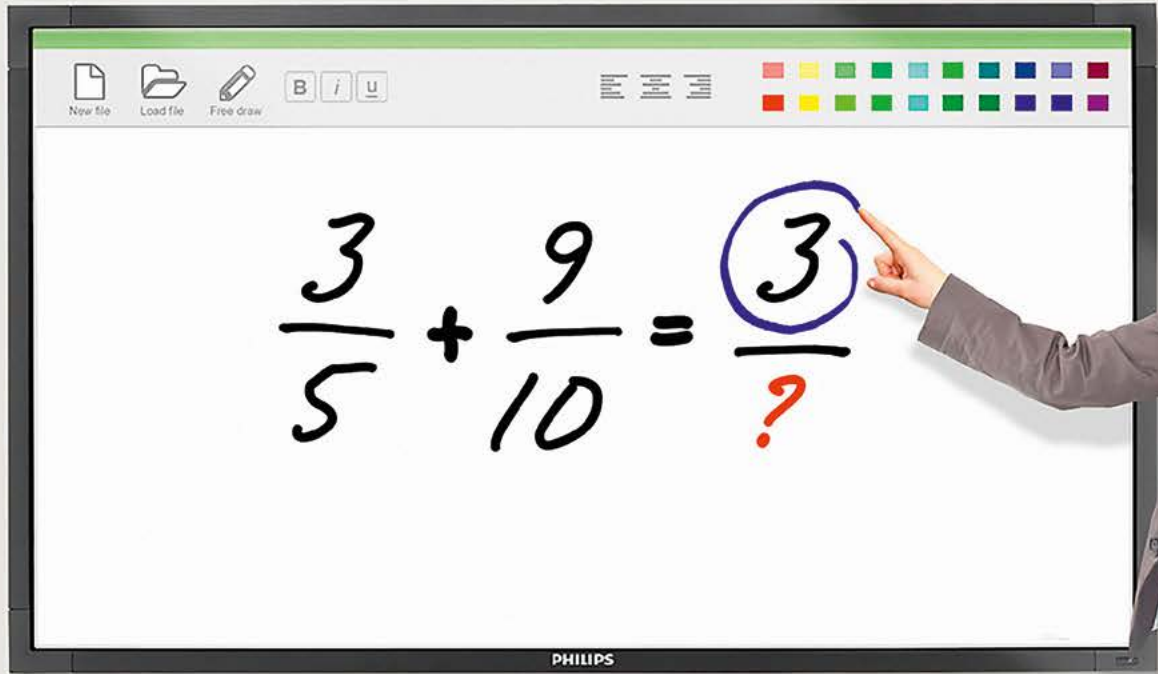
>

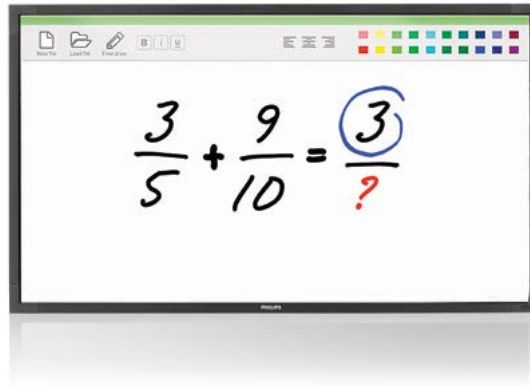


Future proof connectivity with HDBaseT OPS receiver

The OPS receiver module enables the reception of HDBaseT signals. HDBaseT is a connectivity standard over a single CAT5e / 6 cable, converging uncompressed full HD digital video, audio and control signals.

Making use of leading technology standards, the HDBaseT OPS receiver integrated within the OPSinsert provides you with a powerful combination and a unique all-in-one solution.





A signage experience beyond the ordinary

Professional solutions for the widest range of applications

From advanced airport installations to interactive classroom solutions, Philips offers professional display solutions that help you in making the right impression. Our broad range of professional displays is designed with the latest, sustainable and innovative technologies which fit perfectly in any application.



Basic Signage
Slim Full HD
Q-line



Professional Signage
Slim Full HD
E-line



High Brightness
Slim Full HD
V-line



Ultra HD Signage
4K Resolution
U-Line



Videowall Solution
Ultra-Narrow Bezel
X-line



Interactive Signage
Full HD
T-line



Hotel TV
Signature, MediaSuite
EasySuite, Studio



Healthcare TV
EasySuite White



Q-line

Intensify your signage experience with priceless smart performance

Deliver startlingly clear images in a more eco-friendly way with the Q-line displays. High on performance and reliability, yet low on power consumption, it is ideal for projects where no compromise is accepted.



- 65"
- 55"
- 46"
- 42"
- 32"

Optimised for public viewing

- Full HD LED technology for brilliant images

Maximizing the impact of your message

- Manage and control your displays remotely via SmartControl

Innovative solutions for any signage application

- Free and easy-to-use content management with SmartCMS
- Connect and control your content via the cloud with HTML5
- Schedule what you want, when you want with SmartPlayer
- Connect your display and start sharing with DLNA

Care about you, your business and your audience

- SmartPower for energy saving

E-line

Connect with your audience 24/7 with the future proof SmartCollection

With the energy efficient E-line, you will enjoy all the benefits of state-of-the-art connectivity and content management possibilities while being ensured that remote management safeguards the lowest cost of ownership.

Optimized for public viewing

- Full HD LED technology for brilliant images
- Designed for 24/7 operation

Maximizing the impact of your message

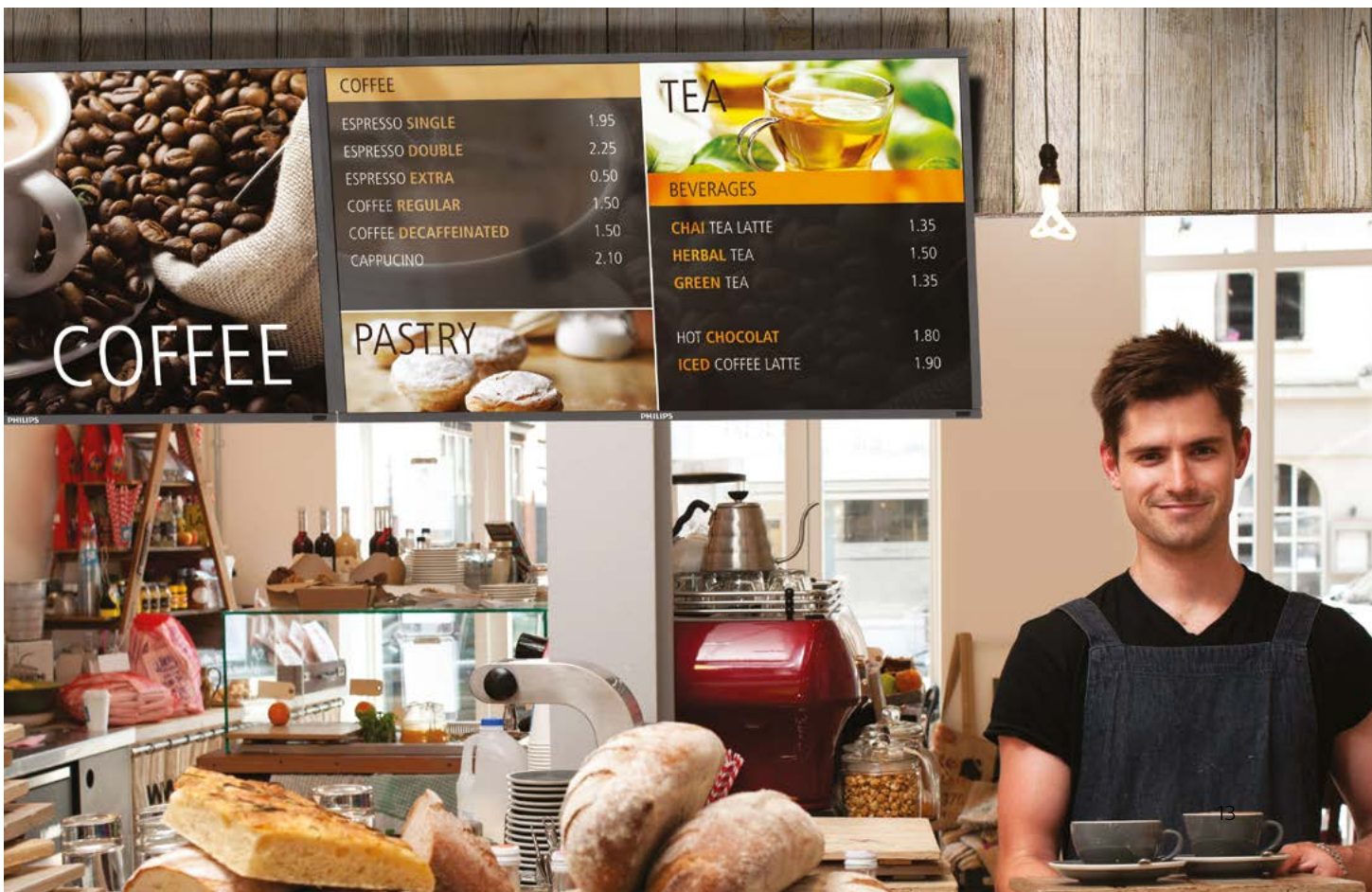
- Manage and control your network remotely via SmartControl

Innovative solutions for any signage application

- Free and easy-to-use content management with SmartCMS
- Connect and control your content via the cloud with HTML5
- Schedule what you want, when you want with SmartPlayer
- OPS Insert to create an all-in-one digital signage solution
- Connect your display and start sharing with DLNA

Care about you, your business and your audience

- SmartPower for energy saving
- Keep your content up and running with FailOver
- Show clinical images consistently with high quality with Clinical D-Image





V-line

Connect with your audience 24/7 with High Brightness displays and the future proof SmartCollection

With the High Brightness V-line, you will enjoy all the benefits of state-of-the-art connectivity and content management possibilities while being ensured that remote management safeguards the lowest cost of ownership.

DEPARTURES				
TIME	DESTINATION	FLIGHT	GATE	STATUS
10:15	PISA	WG236	A4	BOARDING
10:20	DUBLIN	VH8AG	A18	BOARDING
10:30	MALAGA	VHTFU	B12	BOARDING
10:35	BARCELONA	WW635	A78	BOARDING
10:35	BERLIN	R2492	D12	BOARDING
10:35	MOSCOW	S1589	A5	DELAYED
10:40	NEW YORK	WW635	F45	BOARDING
10:40	PARIS	XV179	F63	BOARDING
10:45	ORLANDO	VHTL8	A8	CANCELLED
10:45	BOSTON	WJ474	B78	BOARDING
10:50	BUDAPEST	WB491	B70	BOARDING
10:50	LAS VEGAS	WW633	A95	GO TO GATE
11:00	BRUSSELS	XV493	B9	GATE OPEN
11:00	MARSEILLE	K7381	C13	GO TO GATE
11:00	AMSTERDAM	VHANA	D35	GO TO GATE
11:00	REYKJAVIK	WW603	A7	GO TO GATE
11:00	PORTO	XH117	A38	DELAYED
11:05	ROME	ZA718	A42	GO TO GATE
11:05	CAYO COCO	VHAET	A6	GATE OPEN
11:10	TRIPOLI	VHQJH	E12	GO TO GATE

- 55"
- 46"
- 42"

Optimized for public viewing

- Full HD LED technology for brilliant images
- High Brightness for clearer images
- Designed for 24/7 operation

Maximizing the impact of your message

- Manage and control your network remotely via SmartControl
- Advanced Colour Calibration kit to ensure perfect and uniform colours

Innovative solutions for any signage application

- Free and easy-to-use content management with SmartCMS
- Connect and control your content via the cloud with HTML5
- Schedule what you want, when you want with SmartPlayer
- OPS Insert to create an all-in-one digital signage solution
- Connect your display and start sharing with DLNA

Care about you, your business and your audience

- SmartPower for energy saving
- Keep your content up and running with FailOver
- Show clinical images consistently with high quality with Clinical D-Image

U-line

Ultimate large screen experience in Ultra HD

Experience your Signage Solutions like never before thanks to the ultra large displays with four times the resolution of a conventional Full HD display. An image so refined, so lifelike, it's a window to a new world.

Optimized for public viewing

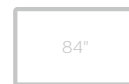
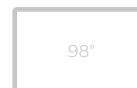
- 4K Ultra HD: resolution like you've never seen it before
- Portrait mode operability
- Designed for 24/7 operation

Maximizing the impact of your message

- Manage and control your network remotely via SmartControl

Care about you, your business and your audience

- Keep your content up and running with FailOver
- SmartPower for energy saving





X-line



Create new stopping power with Ultra Narrow Bezel displays

Impress your audience with the most impactful video wall. With ultra narrow bezel and stunning picture quality, you are sure to create the most memorable visual experience.



55"

47"

46"

Optimized for public viewing

- Full HD LED technology for brilliant images
- High Brightness for clearer images
- Designed for 24/7 operation

Maximizing the impact of your video wall

- Immersive visual experience with Ultra Narrow Bezel
- Advanced Colour Calibration kit to ensure perfect and uniform colours
- Manage and control your video wall remotely via SmartControl

Innovative solutions for any signage application

- Optional OPS Insert to create an all-in-one digital signage solution

Care about you, your business and your audience

- SmartPower for energy saving
- Keep your content up and running with FailOver

T-line

Discover a new level of interaction with true Multi-Touch displays

Get even closer to your audience than ever before. Fast, precise and extremely durable, its high performance is matched by excellent reliability and functionality.

Optimized for public viewing

- Full HD LED technology for brilliant images
- Designed for 24/7 operation
- Picture-in-picture for advanced remote presentation possibilities

Supreme audience interaction

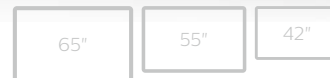
- Multi-Touch technology for advanced user interaction
- True Multi-Touch with multiple simultaneous touch points
- USB Plug-and-Play with HID compliance
- Compatible with all leading operating systems

Maximizing the impact of your message

- Manage and control your network remotely via SmartControl

Care about you, your business and your audience

- SmartPower for energy saving
- Keep your content up and running with FailOver



• Anti-glare



Specifications

>	Q-line					E-line				
Model	BDL3220QL	BDL4220QL	BDL4620QL	BDL5520QL	BDL6520QL	BDL3260EL	BDL4260EL	BDL4660EL	BDL4765EL	BDL5560EL
Picture / Display										
Diagonal Size	32 inch	42 inch	46 inch	55 inch	65 inch	32 inch	42 inch	46 inch	47 inch	55 inch
Backlight Type	E-LED					E-LED				
Panel Technology	MVA	MVA	MVA	IPS	SMVA	IPS	IPS	AMVA	IPS	IPS
Resolution	1920 x 1080p					1920x1080p				
Brightness cd/m ²	350	350	350	350	350	400	450	500	500	450
Contrast Ratio	3000:1	3000:1	4000:1	1400:1	5000:1	1300:1	1300:1	4000:1	1400:1	1300:1
Dynamic Contrast Ratio	500,000:1					500,000:1				
Response Time	6.5 ms	6.5 ms	8 ms	8 ms	6.5 ms	25 ms	12 ms	6.5 ms	12 ms	12 ms
Aspect Ratio	16:9					16:9				
Viewing Angle	178° x 178°					178° x 178°				
Display Colours	16.7 M	16.7 M	16.7 M	16.7 M	1073 M	16.7 M	1073 M	1073 M	1073 M	1073 M
Placement	Landscape					Portrait, Landscape				
Touch Technology	-					OTE3204 Compatible	-			
Touch Points	-					-				
Features										
SmartCollection	SmartPower, SmartControl, SmartPlayer, HTML5-browser, SmartConnect, SmartCMS					SmartPower, SmartControl, Failover, D-Image, SmartPlayer, HTML5-browser, SmartConnect, OPSinsert (>42"), SmartInsert, SmartCMS, Color Calibration Kit				
Energy Efficiency										
Mains Power	100 ~ 240 VAC					100 ~ 240 VAC, 50 ~ 60 Hz				
Consumption (Energy Star 6.0 Test Method)	36W	55W	60W	70W	122W	48.57W	104.49W	93.26W	85.51W	122.52W
Standby Mode	<0.5W					<0.5W				
Connectivity										
video	input	1x HDMI, 1x VGA, 1x YPbPr, 1x DVI-D, 1x USB 2.0, 1x composite (share with YPbPr)				1x VGA, 1x DVI-D, 1x Display port, 1x Composite, 1x Component, 2x HDMI		1x VGA, 1x DVI-D, 1x USB 2.0, 1x Display port, 1x Composite, 1x Component, 2x HDMI		
	output	No				1x DVI-I, 1x VGA (via DVI-I), 1 x DP		1x DVI-I, 1x VGA (via DVI-I), 1 x DP		
audio	input	1x RCA jack, 1x 3.5 jack				1x 3.5mm jack, 1x Audio L/R (RCA)		1x 3.5mm jack, 1x Audio L/R (RCA)		
	output	1x SPDIF, 1x 3.5 jack				1x Audio L/R (RCA), 1x external speaker terminal		1x Audio L/R (RCA), 1x external speaker terminal		
	internal speakers	2x 5W RMS	2x 7W RMS	2x 7W RMS	2x 7W RMS	2x 10 W (RMS)	2x 10 W (RMS)			
control	RS232 daisy-chain, RJ-45, HDMI CEC, IR loop-through				RS232 in/out, 1x RJ45, One wire (HDMI), Ir-out		RS232 in/out, 1x RJ45, One wire (HDMI), Ir-out			
Physical Specifications										
Set Dimensions in mm (WxHxD)	745.0 x 439.5 x 39.8 mm	980.4 x 572.9 x 38.5 mm	1068.0 x 622.5 x 38.8 mm	1264.7 x 735.5 x 42.8 mm	1450.48 x 828.52 x 61.5 mm	750.2 x 444.6 x 69 mm	965.8 x 558.8 x 69 mm	1052.7 x 607.3 x 69 mm	1068.6 x 612.8 x 54.9 mm	1247.0 x 717.8 x 70 mm
Display Weight in Kg	6.53 Kg	11.9 Kg	13.7 Kg	17.86 Kg		11.4 Kg	18.3 Kg	22 Kg	18.2 Kg	30.3 Kg
Bezel Width in mm	19 mm	19.7 mm	19.7 mm	24 mm	7.5 (Top/Left/Right) 10.5 (Bottom)	24.4 mm	15.8 mm	15.8 mm	9.9 mm	15.8 mm
VESA Mount in mm	200x100	400x400	400x400	400x400	400x400	400x200	400x200, 200x200	400 x400, 400x200, 200x200	400x200	400x400, 400x200, 200x200
Smart Insert Mount						100x100	100x100, 200x100	100x100, 200x100	100x100, 200x100	100x100, 200x100
Table Stand (optional)	BM02541	BM02542	BM02542	BM02542	N/A	BM02541	BM02542			
Convenience										
Service & Warranty	3 years					3 years				
MTBF	50.000 hrs					50.000 hrs				

V-line			U-line		X-line			T-line		
BDL4280VL	BDL4680VL	BDL5580VL	BDL8470EU	BDL9870EU	BDL4678XL/ BDL4677XH	BDL4777XL	BDL5588XL/ BDL5588XH	BDL4256ET	BDL5556ET	BDL6526QT
42 inch	46 inch	55 inch	84 inch	98 inch	46 inch	47 inch	55 inch	42 inch	55 inch	65 inch
E-LED			E-LED		D-LED			E-LED		
IPS	AMVA	AMVA	-		SVA	IPS		IPS		SMVA
1920 x 1080p			3840x2160p		1920x1080p			1920x1080p		
700			500		500 (BDL4678XL) 700 (BDL4677XH)	500	500 (BDL5588XL) 700 (BDL5588XH)	450	450	350
1300:1	4000:1	4000:1	1400:1	1300:1	3500:1	1400:1	1400:1	1300:1	1300:1	5000:1
500,000:1			500,000:1		500,000:1			500,000:1		
12 ms	6.5 ms	6.5 ms	-		8 ms	12 ms	12 ms	12ms	12ms	8 ms
16.9			16.9		16.9			16.9		
178° x 178°			178°/178°		178° x 178°			178° x 178°		
1073 M	1073 M	1073 M	1073 M		16.7 M	1073 M	1073 M	1073 M	1073 M	16.7 M
Portrait, Landscape			Portrait, Landscape		Portrait, Landscape			Portrait, Landscape		Landscape
-			-		-			Optical		Optical-Antiglare
-			-		-			6 Touch Points		
SmartPower, SmartControl, Failover, D-Image, SmartPlayer, HTML5-browser, SmartConnect, OPSinsert, SmartInsert, SmartCMS, Color Calibration Kit			4K Ultra HD Resolution, SmartControl, FailOver, SmartPower		Color Calibration Kit, SmartPower, SmartControl, OPSinsert	Color Calibration Kit, SmartPower, SmartControl, OPSinsert	Color Calibration Kit, SmartPower, SmartControl, SmartPlayer, OPSinsert	Plug&Play Touch (HID Compliant), Failover, D-Image, Smart Insert, OPSinsert		Plug&Play Touch, SmartPower, SmartControl, SmartPlayer
100 ~ 240 VAC, 50 ~ 60 Hz			100 ~ 240 VAC, 50 ~ 60 Hz		90 ~ 240 VAC, 50 ~ 60 Hz	100 ~ 240 VAC, 50 ~ 60Hz	90 ~ 240 VAC, 50 ~ 60 Hz	90 ~ 240 VAC, 50 ~ 60 Hz		
97.54W	92.41W	110W	-		75W (BDL4678XL) 95W (BDL4677XH)	-		110W (BDL5588XL) 175W (BDL5588XH)	95W	110W
< 0.5W			-		< 0.5W			< 0.5W		
1x VGA, 1x DVI-D, 1x USB 2.0, 1x Display port, 1x Composite, 1x Component, 2x HDMI			1x VGA, 1x DVI-D, 1x Display Port, 1x Composite, 1x Component		1x VGA, 1x DVI-D, 1x DP, 1x Component, 1x HDMI	1x VGA, 1x DVI-D, 1x DP, 1x Component, 1x HDMI	1x VGA, 1x DVI-D, 1x Display port, 1x Composite, 1x Component, 2x HDMI	1x VGA, 1x DVI-D, 1x Composite, 1x Component, 1x HDMI, 1x Display Port		
1x DVI-I, 1x VGA (via DVI-I), 1 x DP			1x DisplayPort		1x DVI-D/ VGA	-		1x DVI-I, 1x VGA (via DVI-I), 1 x DP	1x DVI-I	1x DVI-I, 1x VGA (via DVI-I), 1 x DP
1x 3.5mm jack, 1x Audio L/R (RCA)			1x RCA jack		1x 3.5mm jack, 1x Audio L/R (RCA)			1x 3.5mm jack, 1x Audio L/R (RCA)		
1x Audio L/R (RCA), 1x external speaker terminal			1x RCA jack, 1x external speaker terminal		1x Audio L/R (RCA), 1x external speaker terminal			1x Audio L/R (RCA), 1x external speaker terminal		
2x 10 W (RMS)			2x 10 W (RMS)		2x 10W (RMS)			2x 10W (RMS)		
RS232 in/out, 1x RJ45, One wire (HDMI), Ir-out			232 in/out, 1x RJ45		RS232 (in/out), 1x RJ45, IR (in/out)	RS232 (in/out), 1x RJ45, IR (in/out)	RS232 in/out, 1x RJ45, One wire (HDMI), Ir-out	RS232 in/out, 1x RJ45		RS232 in/out, 1x RJ45, One wire (HDMI), Ir-out
965.8 x 558.8 x 69 mm	1052.7 x 607.3 x 69 mm	1244.4 x 715.2 x 69 mm	1910.00 x 1102.00 x 77.80 mm	1754.56 x 998.56 x 71.84 mm	1023.98 x 578.57 x 125.7/108.1 mm	1044.9 x 590.0 x 108.8 mm	1213.4 x 686.9 x 103.35 mm	976.16 x 569.5 x 79.8 mm	1257.3 x 728.1 x 79.0 mm	1488.4 x 863.4 x 78.1 mm
18.3 Kg	22.0 Kg	30.2 Kg	67.4 Kg	87.0 Kg	23 Kg	25.5 Kg	29.2 Kg	24.75 Kg	43.0 Kg	54.4 Kg
15.8 mm			22.6 (R/L), 25.6 (T/B) mm	12.80 mm	5.5 mm A-to-A	4.9 mm A-to-A	3.5 mm A-to-A	19.5 mm	19.5 mm	26.2 mm
400x200, 200x200			600x500	640x400	400x200, 200x200	400x400, 400x200, 200x200	400x400	400 x 200, 200 x 200	400x400, 400x200, 200x200	400 x 400
100x100, 100x200			100x100, 100x200	100x100, 100x200	No	No	100x100, 200x100	100x100, 200x100 mm	100x100, 200x100	100x100, 200x100
BM02542			-		BM05462			BM05462		N/A
3 years			3 years		3 years			3 years		
50.000 hrs			50,000 hrs		50.000 hrs			50.000 hrs		

